

# Recombinant Human DPP6 Protein, Myc/DDK-tagged, C13 and N15-labeled

**Cat. No.** DPP6-3851H    **Lot. No.** (See product label)

## SPECIFICATION

<b>Product Overview</b>	DPP6 MS Standard C13 and N15-labeled recombinant protein (NP_570629) with a C-terminal MYC/DDK tag, was expressed in HEK293 cells.
<b>Species</b>	Human
<b>Source</b>	HEK293
<b>Description</b>	This gene encodes a single-pass type II membrane protein that is a member of the peptidase S9B family of serine proteases. This protein has no detectable protease activity, most likely due to the absence of the conserved serine residue normally present in the catalytic domain of serine proteases. However, it does bind specific voltage-gated potassium channels and alters their expression and biophysical properties. Variations in this gene may be associated with susceptibility to amyotrophic lateral sclerosis and with idiopathic ventricular fibrillation. Alternative splicing results in multiple transcript variants.
<b>Molecular Mass</b>	97.4 kDa
<b>AA Sequence</b>	MASLYQRFTGKINTSRSPAPPEASHLLGGQGPEEDGGAGAKPLGPRAQAAAPRE RGGGGGGAGGRPRFQYQARSDGDEEDELVGSNPPQRNWKGIAIALLVILVICSLIVT SVILLTPAEDNSLSQKKKVTVEDLFSEDFKIHDPEAKWISDTEFIYREQKGTVRLWNV ETNTSTVLIEGKKIESLRAIRYEISPDREYALFSYNVEPIYQHSYTGYYVLSKIPHGDPQ SLDPPEVSNAKLQYAGWGPKGQQLIFIFENNIYYCAHVGKQAIRVVSTGKEGVIYNG

 Tel: 1-631-559-9269    1-516-512-3133

 Email: [info@creative-biomart.com](mailto:info@creative-biomart.com)     Fax: 1-631-938-8127

 45-1 Ramsey Road, Shirley, NY 11967, USA

LSDWLYEEEILKTHIAHWWSPDGTRLAYAAINDSRVPIMELPTYTGSIIYPTVKPYHYP  
 KAGSENPSISLHVIGLNGPTHDLEMMPPDDPRMREYYITMVKWATSTKVAVTWLNLR  
 AQNVSILTLCDATTGVCTKKHEDESEAWLHRQNEEPVFSKDGRKFFFIIRAIPQGGRG  
 KFYHITVSSSQPNSSNDNIQSITSGDWDVTKILAYDEKGNKIYFLSTEDLPRRRQLYS  
 ANTVGNFNRQCLSCDLVENCTYFSASFHSMDFLLKCEGPGVPMVTVHNTTDDKKK  
 MFDLETNEHVKKAINDRQMPKVEYRDIEIDDYNLPMQILKPATFTDTTHYPLLLVVDG  
 TPGSQSVAEKFEVSWETVMVSSHGAVVVKCDGRGSGFGQTKLLHEVRRRLGLLEE  
 KDQMEAVRTMLKEQYIDRTRVAVFGKDYGGYLSTYILPAKGENQGQTFTCGSALSPI  
 TDFKLYASAFSERYLGLHGLDNRAYEMTKVAHRVSALEEQQFLIIHPTADEKIHFAQHT  
 AELITQLIRGKANYSLQIYPDESHYFTSSSLKQHLYSIINFFVECFRIQDKLPTVTAKE  
 DEEDTRTRPLEQKLISEEDLAANDILDYKDDDDKV

**Purity** > 80% as determined by SDS-PAGE and Coomassie blue staining

**Stability** Stable for 3 months from receipt of products under proper storage and handling conditions.

**Storage** Store at -80 centigrade. Avoid repeated freeze-thaw cycles.

**Concentration** 50 µg/mL as determined by BCA

**Storage Buffer** 100 mM glycine, 25 mM Tris-HCl, pH 7.3.

## GENE INFORMATION

**Gene Name** DPP6 dipeptidyl-peptidase 6 [ Homo sapiens (human) ]

**Official Symbol** DPP6

**Synonyms** DPP6; dipeptidyl-peptidase 6; dipeptidylpeptidase 6, dipeptidylpeptidase VI; dipeptidyl aminopeptidase-like protein 6; DPPX; DPP VI; dipeptidylpeptidase 6; dipeptidyl

 Tel: 1-631-559-9269 1-516-512-3133

 Email: [info@creative-biomart.com](mailto:info@creative-biomart.com)  Fax: 1-631-938-8127

 45-1 Ramsey Road, Shirley, NY 11967, USA

peptidase 6; dipeptidylpeptidase VI; dipeptidyl peptidase VI; dipeptidyl peptidase IV-like protein; dipeptidyl peptidase IV-related protein; dipeptidyl aminopeptidase-related protein; dipeptidyl aminopeptidase IV-related protein; VF2; FLJ55680; MGC46605;

**Gene ID** 1804

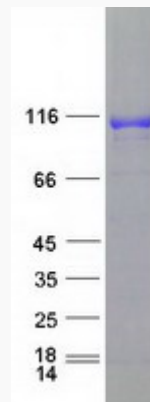
**mRNA Refseq** NM\_130797

**Protein Refseq** NP\_570629

**MIM** 126141

**UniProt ID** P42658

**SDS-PAGE**



 Tel: 1-631-559-9269 1-516-512-3133

 Email: [info@creative-biomart.com](mailto:info@creative-biomart.com)  Fax: 1-631-938-8127

 45-1 Ramsey Road, Shirley, NY 11967, USA