

Recombinant Human DPP7 Protein, GST-tagged

Cat. No. DPP7-2848H **Lot. No.** (See product label)

SPECIFICATION

Product Overview	Human DPP7 full-length ORF (AAH16961.1, 1 a.a. - 492 a.a.) recombinant protein with GST-tag at N-terminal.
Species	Human
Source	Wheat Germ
Description	The protein encoded by this gene is a post-proline cleaving aminopeptidase expressed in quiescent lymphocytes. The resting lymphocytes are maintained through suppression of apoptosis, a state which is disrupted by inhibition of this novel serine protease. The enzyme has strong sequence homology with prolylcarboxypeptidase and is active at both acidic and neutral pH. [provided by RefSeq, Jul 2008]
Molecular Mass	80.7 kDa
AA Sequence	MGSAPWAPVLLLALGLRGLQAGARRAPDPGFQERFFQQRLDHFNFERFGNKTFPQ RFLVSDRFWVRGEGPIFFYTGNEGDVWAFANNSGFVAELAAERGALLVFAEHRYYG KSLPFGAQSTQRGHTELLTVEQALADFAELLRALRRDLGAQDAPAIAFGGSYGGML SAYLRMKYPHLVAGALAASAPVLAVAGLGDSNQFFRDVTADFEGQSPKCTQGVRE AFRQIKDLFLQGAYDTRWEFGTCQPLSDEKDLTQLFMFARNAFTVLAMMDYPYPT DFLGPLPANPVKVGCDRLLSEAQRITGLRALAGLVYNASGSEHCYDIYRLYHSCADP TGCGTGPDARAWDYQACTEINLTFASNNVTDMPDLPFTDELQRQRYCLDTWGVWP RPDWLLTSFWGGDLRAASNIIFSNGNLDPWAGGGIRRNLSSASVIAVTIQGGAHHLDL

 Tel: 1-631-559-9269 1-516-512-3133

 Email: info@creative-biomart.com  Fax: 1-631-938-8127

 45-1 Ramsey Road, Shirley, NY 11967, USA

RASHPEDPASVVEARKLEATIIGEWVKAARREQQPALRGGPRLSL

Applications

Enzyme-linked Immunoabsorbent Assay
 Western Blot (Recombinant protein)
 Antibody Production
 Protein Array

Notes

Best use within three months from the date of receipt of this protein.

Storage

Store at -80 centigrade. Aliquot to avoid repeated freezing and thawing.

Storage Buffer

50 mM Tris-HCl, 10 mM reduced Glutathione, pH=8.0 in the elution buffer.

GENE INFORMATION

Gene Name

[DPP7 dipeptidyl-peptidase 7 \[Homo sapiens \]](#)

Official Symbol

[DPP7](#)

Synonyms

DPP7; dipeptidyl-peptidase 7; dipeptidylpeptidase 7; dipeptidyl peptidase 2; DPPII; DPP II; carboxytripeptidase; dipeptidyl peptidase II; dipeptidyl-peptidase II; dipeptidyl arylamidase II; dipeptidyl aminopeptidase II; quiescent cell proline dipeptidase; QPP; DPP2;

Gene ID

[29952](#)

mRNA Refseq

[NM_013379](#)

Protein Refseq

[NP_037511](#)

MIM

[610537](#)

 Tel: 1-631-559-9269 1-516-512-3133

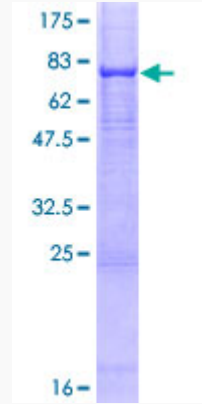
 Email: info@creative-biomart.com  Fax: 1-631-938-8127

 45-1 Ramsey Road, Shirley, NY 11967, USA

UniProt ID

Q9UHL4

Quality Control
Testing



12.5% SDS-PAGE Stained with Coomassie Blue.

 Tel: 1-631-559-9269 1-516-512-3133

 Email: info@creative-biomart.com  Fax: 1-631-938-8127

 45-1 Ramsey Road, Shirley, NY 11967, USA