

## Recombinant Human DPP7 protein, His-tagged

Cat. No. DPP7-285H Lot. No. (See product label)

### SPECIFICATION

<b>Product Overview</b>	Recombinant Human DPP7 protein(NP_037511.2) (Met 1-Leu 492) with a C-terminal polyhistidine tag was expressed in HEK293.
<b>Species</b>	Human
<b>Source</b>	HEK293
<b>ProteinLength</b>	1-492 aa
<b>Form</b>	Lyophilized from sterile PBS, pH 7.4.
<b>Molecular Mass</b>	The secreted recombinant human DPP7 comprises 482 amino acids with a predicted molecular mass of 53.6 kDa. As a result of glycosylation, rh DPP7 migrates as an approximately 60 kDa band in SDS-PAGE under reducing conditions.
<b>Endotoxin</b>	< 1.0 EU per µg of the protein as determined by the LAL method.
<b>Purity</b>	> 98 % as determined by SDS-PAGE
<b>Storage</b>	Store it under sterile conditions at -20°C to -80°C upon receiving. Recommend to aliquot the protein into smaller quantities for optimal storage. Avoid repeated freeze-thaw cycles.
<b>Reconstitution</b>	It is recommended that sterile water be added to the vial to prepare a stock solution of 0.2 ug/ul. Centrifuge the vial at 4°C before opening to recover the entire contents.

 Tel: 1-631-559-9269 1-516-512-3133

 Email: [info@creative-biomart.com](mailto:info@creative-biomart.com)  Fax: 1-631-938-8127

 45-1 Ramsey Road, Shirley, NY 11967, USA

## GENE INFORMATION

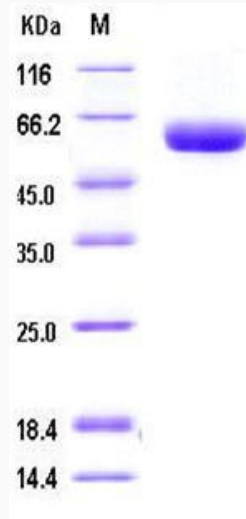
<b>Gene Name</b>	DPP7 dipeptidyl-peptidase 7 [ Homo sapiens ]
<b>Official Symbol</b>	DPP7
<b>Synonyms</b>	DPP7; dipeptidyl-peptidase 7; dipeptidylpeptidase 7; dipeptidyl peptidase 2; DPPII; DPP II; carboxytripeptidase; dipeptidyl peptidase II; dipeptidyl-peptidase II; dipeptidyl arylamidase II; dipeptidyl aminopeptidase II; quiescent cell proline dipeptidase; QPP; DPP2;
<b>Gene ID</b>	29952
<b>mRNA Refseq</b>	NM_013379
<b>Protein Refseq</b>	NP_037511
<b>MIM</b>	610537
<b>UniProt ID</b>	Q9UHL4

 Tel: 1-631-559-9269 1-516-512-3133

 Email: [info@creative-biomart.com](mailto:info@creative-biomart.com)  Fax: 1-631-938-8127

 45-1 Ramsey Road, Shirley, NY 11967, USA

**SDS-PAGE**



 Tel: 1-631-559-9269 1-516-512-3133

 Email: [info@creative-biomart.com](mailto:info@creative-biomart.com)  Fax: 1-631-938-8127

 45-1 Ramsey Road, Shirley, NY 11967, USA