

## Recombinant Human DPT Protein, GST-tagged

Cat. No. DPT-2855H Lot. No. (See product label)

### SPECIFICATION

<b>Product Overview</b>	Human DPT full-length ORF ( NP_001928.2, 1 a.a. - 201 a.a.) recombinant protein with GST-tag at N-terminal.
<b>Species</b>	Human
<b>Source</b>	Wheat Germ
<b>Description</b>	Dermatopontin is an extracellular matrix protein with possible functions in cell-matrix interactions and matrix assembly. The protein is found in various tissues and many of its tyrosine residues are sulphated. Dermatopontin is postulated to modify the behavior of TGF-beta through interaction with decorin. [provided by RefSeq, Jul 2008]
<b>Molecular Mass</b>	50.4 kDa
<b>AA Sequence</b>	MDLSLLWVLLPLVTMAWGQYGDYGYQYQYHDYSDDGWVNLNRQGFSYQCPQG QVIVAVRSIFSKEGSDRQWNYACMPTPQSLGEPTECWWEINRAGMEWYQTCSN NGLVAGFQSRFYFESVLDREWQFYCCRYSKRCPYSCWLTTEYPGHYGEEMDMISYN YDYYIRGATTTFAVERDRQWKFIMCRMTEYDCEFANV
<b>Applications</b>	Enzyme-linked Immunoabsorbent Assay Western Blot (Recombinant protein) Antibody Production Protein Array
<b>Notes</b>	Best use within three months from the date of receipt of this protein.

 Tel: 1-631-559-9269 1-516-512-3133

 Email: [info@creative-biomart.com](mailto:info@creative-biomart.com)  Fax: 1-631-938-8127

 45-1 Ramsey Road, Shirley, NY 11967, USA

**Storage** Store at -80 centigrade. Aliquot to avoid repeated freezing and thawing.

**Storage Buffer** 50 mM Tris-HCl, 10 mM reduced Glutathione, pH=8.0 in the elution buffer.

## GENE INFORMATION

**Gene Name** DPT dermatopontin [ Homo sapiens ]

**Official Symbol** DPT

**Synonyms** DPT; dermatopontin; tyrosine-rich acidic matrix protein; TRAMP;

**Gene ID** 1805

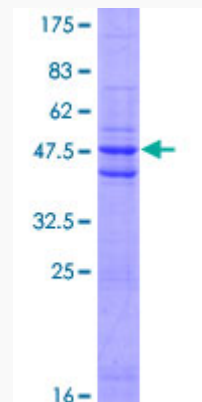
**mRNA Refseq** NM\_001937

**Protein Refseq** NP\_001928

**MIM** 125597

**UniProt ID** Q07507

**Quality Control Testing**



 Tel: 1-631-559-9269 1-516-512-3133

 Email: [info@creative-biomart.com](mailto:info@creative-biomart.com)  Fax: 1-631-938-8127

 45-1 Ramsey Road, Shirley, NY 11967, USA



12.5% SDS-PAGE Stained with Coomassie Blue.

 Tel: 1-631-559-9269 1-516-512-3133

 Email: [info@creative-biomart.com](mailto:info@creative-biomart.com)  Fax: 1-631-938-8127

 45-1 Ramsey Road, Shirley, NY 11967, USA