

Recombinant Full Length Human DPYD Protein, C-Flag-tagged

Cat. No. DPYD-503HFL **Lot. No.** (See product label)

SPECIFICATION

Product Overview	Recombinant Full Length Human DPYD Protein, fused to Flag-tag at C-terminus, was expressed in Mammalian cells.
Species	Human
Source	Mammalian Cells
Description	The protein encoded by this gene is a pyrimidine catabolic enzyme and the initial and rate-limiting factor in the pathway of uracil and thymidine catabolism. Mutations in this gene result in dihydropyrimidine dehydrogenase deficiency, an error in pyrimidine metabolism associated with thymine-uraciluria and an increased risk of toxicity in cancer patients receiving 5-fluorouracil chemotherapy. Two transcript variants encoding different isoforms have been found for this gene.
Form	25 mM Tris HCl, pH 7.3, 100 mM glycine, 10% glycerol.
Molecular Mass	111.2 kDa
AA Sequence	MAPVLSKDSADIESILALNPRTQTHATLCSTSAKKLDKHKWKRNPDKNCFNCEKLEN NFDDIKHTTLGER GALREAMRCLKCADAPCQKSCPTNLDIKSFITSIANKNYYGAAK MIFSDNPLGLTCGMVCPTSDLCVGGC NLYATEEGPINIGGLQQFATEVFKAMSIPQI RNPSLPPPEKMSEAYSAKIALFGAGPASISCASFLARLG YSDITIFEKQEYVGGLSTS EIPQFRLPYDVVNFEIELMKDLGVKIICGKSLSVNEMTLSTLKEKGYKAAF IGIGLPEP NKDAIFQGLTQDQGFYTSKDFLPLVAKGSKAGMCACHSPLPSIRGVVIVLGAGDTAF DCATS ALRCGARRVFIVFRKGFVNIRAVPEEMELAKEEKCEFLPFLSPRKVIVKGGRI

 Tel: 1-631-559-9269 1-516-512-3133

 Email: info@creative-biomart.com  Fax: 1-631-938-8127

 45-1 Ramsey Road, Shirley, NY 11967, USA

VAMQFVRTEQDETGKWN EDEDQMVHLKADVVISAFGSVLSDPKVKEALSPIKFNR
 WGLPEVDPETMQTSEAWVFAGGDVVLANTTV ESVNDGKQASWYIHKYVQSQYG
 ASVSAKPELPLFYTPIDLVDISVEMAGLKFNPFGLASATPATSTSMI RRAFEAGWG
 FALTKTFLSLDKDIVTNVSPRIIRGTTSGPMYGPQGSSFLNIELISEKTAAYWCQSVTEL
 KA DFPDNIVIASIMCSYNKNDWTELAKKSEDSGADALELNLSCPHGMGERGMGLAC
 GQDPELVRNICRWRQ AVQIPFFAKLTPNVTDIVSIARAAKEGGANGVTATNTVSGL
 MGLKSDGTPWPAVGIKRRTTYGGVSGTAI RPIALRAVTSIARALPGFPILATGGIDSA
 ESGLQFLHSGASVLQVCSAIQNQDFTVIEDYCTGLKALLYL KSIEELQDWDGQSPAT
 VSHQKGPVPRIAEMLDKKLPSFGPYLEQRKKIIAENKIRLKEQNVAFSPLKRN CFIP
 KRPIPTIKDVIGKALQYLGTFGELSNVEQVVAMIDEEMCINCGKCYMTCNDSGYQAIQ
 FDPETHLP
 TITDTCTGCTLCLSVCPIVDCIKMVSRTTPYEPKRGVPLSVNPVCTRTRPLEQKLISEE
 DLAANDILDYKDDDDKV

Purity > 80% as determined by SDS-PAGE and Coomassie blue staining.

Stability Stable for 12 months from the date of receipt of the product under proper storage and handling conditions. Avoid repeated freeze-thaw cycles.

Storage Store at -80 centigrade.

Concentration >50 ug/mL as determined by microplate BCA method.

Preparation Recombinant protein was captured through anti-DDK affinity column followed by conventional chromatography steps.

Protein Families Druggable Genome

Protein Pathways beta-Alanine metabolism, Drug metabolism - other enzymes, Metabolic pathways, Pantothenate and CoA biosynthesis, Pyrimidine metabolism

 Tel: 1-631-559-9269 1-516-512-3133

 Email: info@creative-biomart.com  Fax: 1-631-938-8127

 45-1 Ramsey Road, Shirley, NY 11967, USA

Full Length Full L.

GENE INFORMATION

Gene Name DPYD dihydropyrimidine dehydrogenase [Homo sapiens (human)]

Official Symbol DPYD

Synonyms DHP; DPD; DYPD; DHPDHASE

Gene ID 1806

mRNA Refseq NM_000110.4

Protein Refseq NP_000101.2

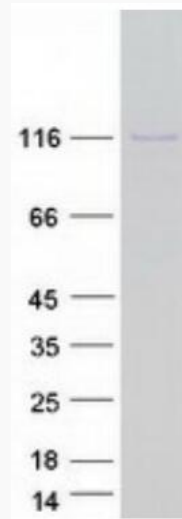
MIM 612779

UniProt ID Q12882

 Tel: 1-631-559-9269 1-516-512-3133

 Email: info@creative-biomart.com  Fax: 1-631-938-8127

 45-1 Ramsey Road, Shirley, NY 11967, USA



Coomassie blue staining of purified DPYD protein.

 Tel: 1-631-559-9269 1-516-512-3133

 Email: info@creative-biomart.com  Fax: 1-631-938-8127

 45-1 Ramsey Road, Shirley, NY 11967, USA