

# Recombinant Full Length Human DPYSL2 Protein

Cat. No. DPYSL2-1193H Lot. No. (See product label)

## SPECIFICATION

<b>Product Overview</b>	Recombinant Human DPYSL3 Protein (1-572aa) was expressed in Yeast with N-terminal His-tag.
<b>Species</b>	Human
<b>Source</b>	Yeast
<b>ProteinLength</b>	1-572 a.a.
<b>Form</b>	Tris-based buffer, 50% glycerol.
<b>Molecular Mass</b>	64.3 kDa
<b>AA Sequence</b>	<p>MSYQGKKNIPRITSDRLLIKGGKIVNDDQSFYADIYMEDGLIKQIGENLIVPGGVKTIEA  HSRMVIPGGIDVHTRFQMPDQGMTSADDDFFQGTKAALAGGTTMIIDHVVPEPGTSL  AAFDQWREWADSKSCCDYSLHVDISEWHKGIQEEMEALVKDHGVNSFLVYMAFKD  RFQLTDCQIYEVLSVIRDIGAIQVHAENGDIIEEQQRILDLGITGPEGHVLSRPEEVE  AEAVNRAITIANQTNCPYITKVMSSAEVIAQARKKGTVVYGEPIASLGTDGSHY  WSKNWAKAAAFVTSPPSPDPTTDFLNSLLSCGDLQVTGSAHCTFNATAQKAVGKD  NFTLIPEGTNGTEERMSVIWDKAVVTGKMDENQFVAVTSTNAAKVFNLVPRKGRIAV  GSDADLVIWDPDSVKTISAKTHNSSLEYNIFEGMECRGSPLVVISQGKIVLEDGTLHV  TEGSGRYIPRKPFDFVYKRIKARSRLAELRGVPRGLYDGPVCEVSVTPKTVTPASS  AKTSPAKQQAPPVRLHQSGFSLSGAQIDDNIPRRTTQRIVAPPGGRANITSLG</p>
<b>Purity</b>	Greater than 90% as determined by SDS-PAGE.

 Tel: 1-631-559-9269 1-516-512-3133

 Email: [info@creative-biomart.com](mailto:info@creative-biomart.com)  Fax: 1-631-938-8127

 45-1 Ramsey Road, Shirley, NY 11967, USA

**Storage** The shelf life of liquid form is 6 months at -20 centigrade/-80 centigrade. The shelf life of lyophilized form is 12 months at -20 centigrade/-80 centigrade.

## GENE INFORMATION

**Gene Name** DPYSL2 dihydropyrimidinase-like 2 [ Homo sapiens (human) ]

**Official Symbol** DPYSL2

**Synonyms** DPYSL2; DRP2; N2A3; CRMP2; DRP-2; ULIP2; CRMP-2; DHPRP2; ULIP-2; dihydropyrimidinase-like 2; dihydropyrimidinase-related protein 2; unc-33-like phosphoprotein 2; collapsin response mediator protein hCRMP-2

**Gene ID** 1808

**mRNA Refseq** NM\_001386

**Protein Refseq** NP\_001377

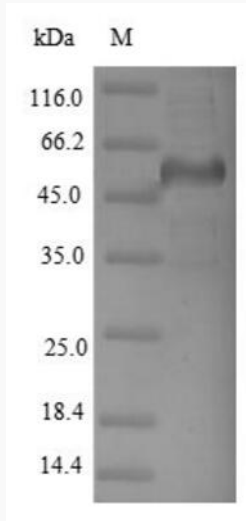
**MIM** 602463

**UniProt ID** Q16555

 Tel: 1-631-559-9269 1-516-512-3133

 Email: [info@creative-biomart.com](mailto:info@creative-biomart.com)  Fax: 1-631-938-8127

 45-1 Ramsey Road, Shirley, NY 11967, USA



 Tel: 1-631-559-9269 1-516-512-3133

 Email: [info@creative-biomart.com](mailto:info@creative-biomart.com)  Fax: 1-631-938-8127

 45-1 Ramsey Road, Shirley, NY 11967, USA