

Recombinant Human DPYSL2 Protein (Thr13-Glu490), N-His tagged

Cat. No. DPYSL2-1988H Lot. No. (See product label)

SPECIFICATION

Product Overview	Recombinant human CRMP2/DPYSL2 (Thr13-Glu490) fused with N-His tag was expressed in E. coli.
Species	Human
Source	E.coli
ProteinLength	Thr13-Glu490
Form	Lyophilized powder/frozen liquid
Molecular Mass	54.66 kDa
Purity	>90% as determined by SDS-PAGE
Notes	For research use only.
Storage	Use a manual defrost freezer and avoid repeated freeze thaw cycles. Store at 2 to 8 centigrade for one week. Store at -20 to -80 centigrade for twelve months from the date of receipt.
Storage Buffer	0.01M PBS, pH 7.4, 0.02% NLS
Reconstitution	Reconstitute in sterile water for a stock solution.

 Tel: 1-631-559-9269 1-516-512-3133

 Email: info@creative-biomart.com  Fax: 1-631-938-8127

 45-1 Ramsey Road, Shirley, NY 11967, USA

Shipping

They are shipped out with dry ice/blue ice unless customers require otherwise.

GENE INFORMATION
Gene Name

DPYSL2 dihydropyrimidinase-like 2 [Homo sapiens (human)]

Official Symbol

DPYSL2

Synonyms

DPYSL2; dihydropyrimidinase-like 2; dihydropyrimidinase-related protein 2; CRMP2; DHPRP2; DRP 2; DRP2; unc-33-like phosphoprotein 2; collapsin response mediator protein hCRMP-2; N2A3; DRP-2; ULIP2; CRMP-2; ULIP-2;

Gene ID

1808

mRNA Refseq

NM_001197293

Protein Refseq

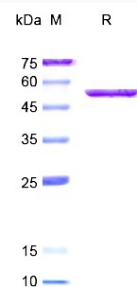
NP_001184222

MIM

602463

UniProt ID

Q16555

SDS-PAGE


Tel: 1-631-559-9269 1-516-512-3133

Email: info@creative-biomart.com Fax: 1-631-938-8127

45-1 Ramsey Road, Shirley, NY 11967, USA