

Active Recombinant Full Length Human DPYSL2 Protein, C-Flag-tagged

Cat. No. DPYSL2-42HFL Lot. No. (See product label)

SPECIFICATION

Product Overview	Recombinant Full Length Human DPYSL2 Protein, fused to Flag-tag at C-terminus, was expressed in Mammalian cells.
Species	Human
Source	Mammalian Cells
Description	<p>This gene encodes a member of the collapsin response mediator protein family. Collapsin response mediator proteins form homo- and hetero-tetramers and facilitate neuron guidance, growth and polarity. The encoded protein promotes microtubule assembly and is required for Sema3A-mediated growth cone collapse, and also plays a role in synaptic signaling through interactions with calcium channels. This gene has been implicated in multiple neurological disorders, and hyperphosphorylation of the encoded protein may play a key role in the development of Alzheimer's disease. Alternatively spliced transcript variants encoding multiple isoforms have been observed for this gene.</p>
Form	25 mM Tris HCl, pH 7.3, 100 mM glycine, 10% glycerol.
Bio-activity	WB positive control
Molecular Mass	62.1 kDa
AA Sequence	MSYQGKKNIPRITSDRLLIKGGKIVNDDQSFYADIYMEDGLIKQIGENLIVPGGVKTIEA

 Tel: 1-631-559-9269 1-516-512-3133

 Email: info@creative-biomart.com  Fax: 1-631-938-8127

 45-1 Ramsey Road, Shirley, NY 11967, USA

HSRMVIPGGI DVHTRFQMPDQGMSADDDFFQGTKAALAGGTTMIIDHVPEPGTSL
 LAAFDQWREWADSKSCCDYSLHVD ISEWHKGIQEEMEALVKDHGVNSFLVYMAFK
 DRFQLTDCQIYEVLSVIRDIGAIAQVHAENGDIIAEEQQ RILDLGITGPEGHVLSRPEE
 VEAEAVNRAITIANQTNCPYITKVMSSSAEVIAQARKKGTVVYGEPIIT ASLGTDGS
 HYWSKNWAKAAAFVTSPPLSPDPTTDFLNSLLSCGDLQVTGSAHCTFNTAQKAVG
 KDNFTL IPEGTNGTEERMSVIWDKAVVTGKMDENQFVAVTSTNAAKVFNLYPRKGR
 IAVGSDADLVIWDPDSVKTI SAKTHNSSLEYNIFEGMECRGSPLVVISQGKIVLEDGT
 LHVTEGSGRYIPRKPFPDFVYKRIKARSRLAE LRGVPRGLYDGPVCEVSVTPKTVTP
 ASSAKTSPAKQQAPPVRNLHQSGFSLSGAQIDDNIPRRTTQRIVA
 PPGGRANITSLGTRTRPLEQKLISEEDLAANDILDYKDDDDKV

Purity	> 80% as determined by SDS-PAGE and Coomassie blue staining.
Stability	Stable for 12 months from the date of receipt of the product under proper storage and handling conditions. Avoid repeated freeze-thaw cycles.
Storage	Store at -80 centigrade.
Concentration	>50 ug/mL as determined by microplate BCA method.
Preparation	Recombinant protein was captured through anti-DDK affinity column followed by conventional chromatography steps.
Protein Families	Druggable Genome
Protein Pathways	Axon guidance
Full Length	Full L.

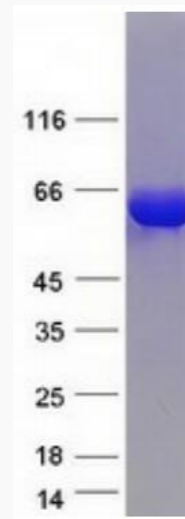
GENE INFORMATION

 Tel: 1-631-559-9269 1-516-512-3133

 Email: info@creative-biomart.com  Fax: 1-631-938-8127

 45-1 Ramsey Road, Shirley, NY 11967, USA

Gene Name	DPYSL2 dihydropyrimidinase like 2 [Homo sapiens (human)]
Official Symbol	DPYSL2
Synonyms	DRP2; N2A3; CRMP2; DRP-2; ULIP2; CRMP-2; DHPRP2; ULIP-2
Gene ID	1808
mRNA Refseq	NM_001386.6
Protein Refseq	NP_001377.1
MIM	602463
UniProt ID	Q16555



Coomassie blue staining of purified DPYSL2 protein.

 Tel: 1-631-559-9269 1-516-512-3133

 Email: info@creative-biomart.com  Fax: 1-631-938-8127

 45-1 Ramsey Road, Shirley, NY 11967, USA