

## Recombinant Mouse DRD2 protein, His-tagged

Cat. No. DRD2-1235M Lot. No. (See product label)

### SPECIFICATION

|                         |  |
|-------------------------|--|
| <b>Product Overview</b> | Recombinant Mouse DRD2 protein(Ser194~Ala421), fused with N-terminal His Tag, was expressed in E.coli.     |
| <b>Species</b>          | Mouse  |
| <b>Source</b>           | E.coli   |
| <b>ProteinLength</b>    | Ser194~Ala421  |
| <b>Form</b>             | PBS, pH7.4, containing 0.01% SKL, 1mM DTT, 5% Trehalose and Proclin300.                                    |
| <b>Endotoxin</b>        | <1.0EU per 1g (determined by the LAL method)   |
| <b>Purity</b>           | > 90%  |
| <b>Storage</b>          | Avoid repeated freeze/thaw cycles. Store at 2-8°C for one month. Aliquot and store at -80°C for 12 months. |
| <b>Reconstitution</b>   | Reconstitute in 10mM PBS (pH7.4) to a concentration of 0.1-1.0 mg/mL. Do not vortex.                       |

### GENE INFORMATION

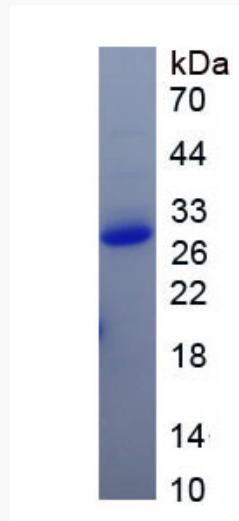
|                  |  |
|------------------|--|
| <b>Gene Name</b> | <a href="#">Drd2 dopamine receptor D2 [ Mus musculus ]</a> |
|------------------|--|

 Tel: 1-631-559-9269 1-516-512-3133

 Email: [info@creative-biomart.com](mailto:info@creative-biomart.com)  Fax: 1-631-938-8127

 45-1 Ramsey Road, Shirley, NY 11967, USA

|                        |   |
|------------------------|---|
| <b>Official Symbol</b> | DRD2  |
| <b>Synonyms</b>        | DRD2; dopamine receptor D2; D(2) dopamine receptor; D2 receptor; dopamine receptor 2; dopamine D2 receptor; D2R; Drd-2; |
| <b>Gene ID</b>         | 13489   |
| <b>mRNA Refseq</b>     | NM_010077   |
| <b>Protein Refseq</b>  | NP_034207   |

**SDS-PAGE**

 Tel: 1-631-559-9269 1-516-512-3133

 Email: [info@creative-biomart.com](mailto:info@creative-biomart.com)  Fax: 1-631-938-8127

 45-1 Ramsey Road, Shirley, NY 11967, USA