

Recombinant Human DRD2 Protein, His-tagged

Cat. No. DRD2-1381H Lot. No. (See product label)

SPECIFICATION

Product Overview	Recombinant Human DRD2 Protein (Ser194-Ala420) with N-His tag was expressed in E. coli.
Species	Human
Source	E.coli
ProteinLength	Ser194-Ala420
Description	This gene encodes the D2 subtype of the dopamine receptor. This G-protein coupled receptor inhibits adenylyl cyclase activity. A missense mutation in this gene causes myoclonus dystonia; other mutations have been associated with schizophrenia. Alternative splicing of this gene results in two transcript variants encoding different isoforms. A third variant has been described, but it has not been determined whether this form is normal or due to aberrant splicing.
Form	Freeze-dried powder
Molecular Mass	Predicted Molecular Mass: 29.8 kDa Accurate Molecular Mass: 28 kDa
Purity	> 97%
Applications	Positive Control; Immunogen; SDS-PAGE; WB.

 Tel: 1-631-559-9269 1-516-512-3133

 Email: info@creative-biomart.com  Fax: 1-631-938-8127

 45-1 Ramsey Road, Shirley, NY 11967, USA

Stability	The thermal stability is described by the loss rate. The loss rate was determined by accelerated thermal degradation test, that is, incubate the protein at 37 centigrade for 48h, and no obvious degradation and precipitation were observed. The loss rate is less than 5% within the expiration date under appropriate storage condition.
Storage	Avoid repeated freeze/thaw cycles. Store at 2-8 centigrade for one month. Aliquot and store at -80 centigrade for 12 months.
Storage Buffer	20mM Tris, 150mM NaCl, pH8.0, containing 1mM EDTA, 1mM DTT, 0.01% SKL, 5% Trehalose and Proclin300.
Reconstitution	Reconstitute in 10mM PBS (pH7.4) to a concentration of 0.1-1.0 mg/mL. Do not vortex.

GENE INFORMATION

Gene Name	DRD2 dopamine receptor D2 [Homo sapiens (human)]
Official Symbol	DRD2
Synonyms	DRD2; dopamine receptor D2; D(2) dopamine receptor; dopamine D2 receptor; dopamine receptor D2 isoform; seven transmembrane helix receptor; D2R; D2DR;
Gene ID	1813
mRNA Refseq	NM_000795
Protein Refseq	NP_000786
MIM	126450

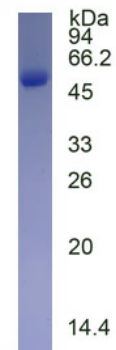
 Tel: 1-631-559-9269 1-516-512-3133

 Email: info@creative-biomart.com  Fax: 1-631-938-8127

 45-1 Ramsey Road, Shirley, NY 11967, USA

UniProt ID

P14416



 Tel: 1-631-559-9269 1-516-512-3133

 Email: info@creative-biomart.com  Fax: 1-631-938-8127

 45-1 Ramsey Road, Shirley, NY 11967, USA