

## Recombinant Human DRD2 Protein, His-tagged

**Cat. No.** DRD2-16H    **Lot. No.** (See product label)

### SPECIFICATION

<b>Product Overview</b>	Recombinant protein of Human dopamine receptor D2 protein (Ser194~Ala420) with N-terminal His Tag was expressed in E.coli.
<b>Species</b>	Human
<b>Source</b>	E.coli
<b>ProteinLength</b>	194-420 a.a.
<b>Description</b>	This gene encodes the D2 subtype of the dopamine receptor. This G-protein coupled receptor inhibits adenylyl cyclase activity. A missense mutation in this gene causes myoclonus dystonia; other mutations have been associated with schizophrenia. Alternative splicing of this gene results in two transcript variants encoding different isoforms. A third variant has been described, but it has not been determined whether this form is normal or due to aberrant splicing.
<b>Form</b>	Freeze-dried powder
<b>Molecular Mass</b>	29.8 kDa
<b>Endotoxin</b>	<1.0 EU per 1g (determined by the LAL method)
<b>Purity</b>	> 97%
<b>Applications</b>	Positive Control; Immunogen; SDS-PAGE; WB.

 Tel: 1-631-559-9269    1-516-512-3133

 Email: [info@creative-biomart.com](mailto:info@creative-biomart.com)     Fax: 1-631-938-8127

 45-1 Ramsey Road, Shirley, NY 11967, USA

<b>Notes</b>	The kit is designed for research use only, we will not be responsible for any issue if the kit was used in clinical diagnostic or any other procedures.
<b>Stability</b>	The thermal stability is described by the loss rate. The loss rate was determined by accelerated thermal degradation test, that is, incubate the protein at 37 centigrade for 48 h, and no obvious degradation and precipitation were observed. The loss rate is less than 5% within the expiration date under appropriate storage condition.
<b>Storage</b>	Avoid repeated freeze/thaw cycles. Store at 2-8 centigrade for one month. Aliquot and store at -80 centigrade for 12 months.
<b>Concentration</b>	200 g/mL
<b>Storage Buffer</b>	20mM Tris, 150mM NaCl, pH8.0, containing 1mM EDTA, 1mM DTT, 0.01% SKL, 5% Trehalose and Proclin300.
<b>Reconstitution</b>	Reconstitute in 20mM Tris, 150mM NaCl (pH8.0) to a concentration of 0.1-1.0 mg/mL. Do not vortex.

## GENE INFORMATION

<b>Gene Name</b>	DRD2 dopamine receptor D2 [ Homo sapiens (human) ]
<b>Official Symbol</b>	DRD2
<b>Synonyms</b>	DRD2; dopamine receptor D2; D2R; D2DR; D(2) dopamine receptor; dopamine D2 receptor; dopamine receptor D2 isoform; seven transmembrane helix receptor
<b>Gene ID</b>	1813
<b>mRNA Refseq</b>	NM_000795

 Tel: 1-631-559-9269 1-516-512-3133

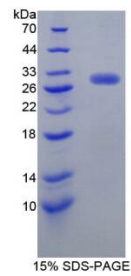
 Email: [info@creative-biomart.com](mailto:info@creative-biomart.com)  Fax: 1-631-938-8127

 45-1 Ramsey Road, Shirley, NY 11967, USA

**Protein Refseq** NP\_000786

**MIM** 126450

**UniProt ID** P14416



 Tel: 1-631-559-9269 1-516-512-3133

 Email: [info@creative-biomart.com](mailto:info@creative-biomart.com)  Fax: 1-631-938-8127

 45-1 Ramsey Road, Shirley, NY 11967, USA