

Recombinant Human DRD2 Protein (Lys221-Gln373), N-His tagged

Cat. No. DRD2-1991H Lot. No. (See product label)

SPECIFICATION

Product Overview	Recombinant human DRD2 (Lys221-Gln373) fused with N-His tag was expressed in E. coli.
Species	Human
Source	E.coli
ProteinLength	Lys221-Gln373
Form	Lyophilized powder/frozen liquid
Molecular Mass	19.70 kDa
Purity	>90% as determined by SDS-PAGE
Notes	For research use only.
Storage	Use a manual defrost freezer and avoid repeated freeze thaw cycles. Store at 2 to 8 centigrade for one week. Store at -20 to -80 centigrade for twelve months from the date of receipt.
Storage Buffer	0.01M PBS, pH 7.4, 0.02% NLS
Reconstitution	Reconstitute in sterile water for a stock solution.

 Tel: 1-631-559-9269 1-516-512-3133

 Email: info@creative-biomart.com  Fax: 1-631-938-8127

 45-1 Ramsey Road, Shirley, NY 11967, USA

Shipping

They are shipped out with dry ice/blue ice unless customers require otherwise.

GENE INFORMATION
Gene Name

DRD2 dopamine receptor D2 [Homo sapiens (human)]

Official Symbol

DRD2

Synonyms

DRD2; dopamine receptor D2; D (2) dopamine receptor; dopamine D2 receptor; dopamine receptor D2 isoform; seven transmembrane helix receptor; D2R; D2DR;

Gene ID

1813

mRNA Refseq

NM_000795

Protein Refseq

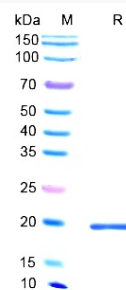
NP_000786

MIM

126450

UniProt ID

P14416

SDS-PAGE


Tel: 1-631-559-9269 1-516-512-3133

Email: info@creative-biomart.com Fax: 1-631-938-8127

45-1 Ramsey Road, Shirley, NY 11967, USA