

## Recombinant Human DRD2 HEK293T cell lysate

Cat. No. DRD2-21HL Lot. No. (See product label)

### SPECIFICATION

<b>Product Overview</b>	Human DRD2 derived in Human HEK293T cell line.
<b>Species</b>	Human
<b>Source</b>	HEK293
<b>Description</b>	<p>This gene encodes the D2 subtype of the dopamine receptor. This G-protein coupled receptor inhibits adenylyl cyclase activity. A missense mutation in this gene causes myoclonus dystonia; other mutations have been associated with schizophrenia. Alternative splicing of this gene results in two transcript variants encoding different isoforms. A third variant has been described, but it has not been determined whether this form is normal or due to aberrant splicing.</p>
<b>Form</b>	<p>1 vial of 100 ug gene specific transient over-expression cell lysate in RIPA buffer            1 vial of 100 ?g empty vector transfected control cell lysate in RIPA buffer            1 vial of 250ul 2xSDS Sample Buffer (4% SDS, 125mM Tris-HCl pH6.8, 10% Glycerol, 0.002% Bromphenol blue, 100mM DTT)</p>
<b>Molecular Mass</b>	47.2 kDa
<b>Storage</b>	<p>The lysate is shipped with dry ice. Upon receiving, store the sample at -20 centigrade. Lysate samples are stable for 12 months from date of receipt when stored at -20 centigrade. Avoid repeated freeze-thaw cycles.</p> <p>Lysate samples can be diluted with 2xSDS Sample Buffer provided. After dilution, the protein sample should be aliquoted and stored at -20 centigrade for long term</p>

 Tel: 1-631-559-9269 1-516-512-3133

 Email: [info@creative-biomart.com](mailto:info@creative-biomart.com)  Fax: 1-631-938-8127

 45-1 Ramsey Road, Shirley, NY 11967, USA

storage. Prior to SDS-PAGE fractionation, boil the lysate for 5 minutes.

## GENE INFORMATION

<b>Gene Name</b>	DRD2 dopamine receptor D2 [ Homo sapiens ]
<b>Official Symbol</b>	DRD2
<b>Synonyms</b>	DRD2; dopamine receptor D2; D(2) dopamine receptor; dopamine D2 receptor; dopamine receptor D2 isoform; seven transmembrane helix receptor; D2R; D2DR;
<b>Gene ID</b>	1813
<b>mRNA Refseq</b>	NM_016574
<b>Protein Refseq</b>	NP_057658
<b>MIM</b>	126450
<b>UniProt ID</b>	P14416
<b>Chromosome Location</b>	11q22-q23
<b>Pathway</b>	Amine ligand-binding receptors, organism-specific biosystem; Class A/1 (Rhodopsin-like receptors), organism-specific biosystem; Cocaine addiction, organism-specific biosystem; Cocaine addiction, conserved biosystem; Dopamine receptors, organism-specific biosystem; Dopaminergic synapse, organism-specific biosystem; Dopaminergic synapse, conserved biosystem;
<b>Function</b>	G-protein coupled receptor activity; dopamine binding; dopamine receptor activity,

 Tel: 1-631-559-9269 1-516-512-3133

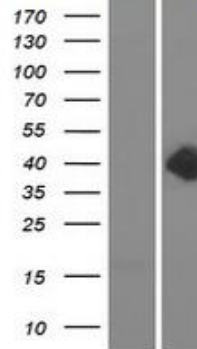
 Email: [info@creative-biomart.com](mailto:info@creative-biomart.com)  Fax: 1-631-938-8127

 45-1 Ramsey Road, Shirley, NY 11967, USA

coupled via Gi/Go; dopamine receptor activity, coupled via Gi/Go; drug binding; drug binding; ionotropic glutamate receptor binding; potassium channel regulator activity; protein binding; receptor activity; receptor binding; signal transducer activity;

**Western validation with an anti-DDK antibody\***

L: Control HEK293 lysate  
R: Over-expression lysate



 Tel: 1-631-559-9269 1-516-512-3133

 Email: [info@creative-biomart.com](mailto:info@creative-biomart.com)  Fax: 1-631-938-8127

 45-1 Ramsey Road, Shirley, NY 11967, USA