

Active Recombinant Human DRD2 Full Length Transmembrane protein, C-Flag tag(Synthetic Nanodisc)

Cat. No. DRD2-22H Lot. No. (See product label)

SPECIFICATION

Product Overview	Active Recombinant Human DRD2 Full Length Transmembrane protein(P14416), fused with C-terminal Flag tag, was expressed in HEK293.
Species	Human
Source	HEK293
Form	Lyophilized from nanodisc solubilization buffer (20 mM Tris-HCl, 150 mM NaCl, pH 8.0). Normally 5% – 8% trehalose is added as protectants before lyophilization.
Bio-activity	Elisa plates were pre-coated with Flag Tag DRD2-Nanodisc (0.2µg/per well). Serial diluted anti-Flag monoclonal antibody solutions were added, washed, and incubated with secondary antibody before Elisa reading. From above data, the EC50 for anti-Flag monoclonal antibody binding with DRD2-Nanodisc is 3.314ng/ml.
Molecular Mass	he human full length DRD2 protein has a MW of 50.6 kDa.
Storage	Store at -20°C to -80°C for 12 months in lyophilized form. After reconstitution, if not intended for use within a month, aliquot and store at -80°C (Avoid repeated freezing and thawing). Lyophilized proteins are shipped at ambient temperature.
Reconstitution	It is recommended that sterile water be added to the vial to prepare a stock solution of 0.2 ug/ul. Centrifuge the vial at 4°C before opening to recover the entire contents.

 Tel: 1-631-559-9269 1-516-512-3133

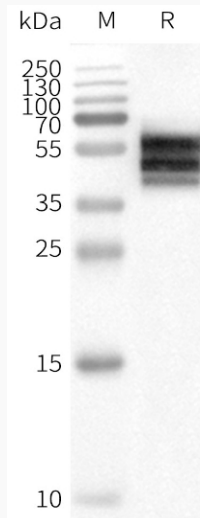
 Email: info@creative-biomart.com  Fax: 1-631-938-8127

 45-1 Ramsey Road, Shirley, NY 11967, USA

GENE INFORMATION

Gene Name	DRD2 dopamine receptor D2 [Homo sapiens]
Official Symbol	DRD2
Synonyms	DRD2; dopamine receptor D2; D(2) dopamine receptor; dopamine D2 receptor; dopamine receptor D2 isoform; seven transmembrane helix receptor; D2R; D2DR;
Gene ID	1813
mRNA Refseq	NM_000795
Protein Refseq	NP_000786
MIM	126450
UniProt ID	P14416

WB

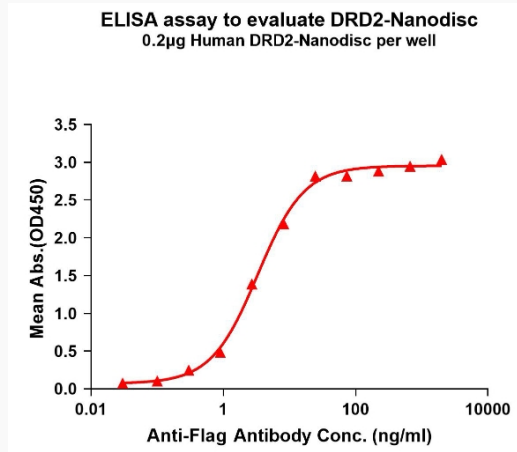


Tel: 1-631-559-9269 1-516-512-3133

Email: info@creative-biomart.com Fax: 1-631-938-8127

45-1 Ramsey Road, Shirley, NY 11967, USA

Elisa



 Tel: 1-631-559-9269 1-516-512-3133

 Email: info@creative-biomart.com  Fax: 1-631-938-8127

 45-1 Ramsey Road, Shirley, NY 11967, USA