

## Recombinant Human DSC2 protein, His-tagged

Cat. No. DSC2-3856H Lot. No. (See product label)

### SPECIFICATION

<b>Product Overview</b>	Recombinant Human DSC2 protein(Met 1-Arg 684)(Q02487-1) was expressed in HEK293, with a C-terminal polyhistidine tag.
<b>Species</b>	Human
<b>Source</b>	HEK293
<b>ProteinLength</b>	1-684 aa
<b>Form</b>	Lyophilized from sterile PBS, pH 7.4.
<b>Molecular Mass</b>	The secreted recombinant human DSC2 (pro form) consists of 668 amino acids and predicts a molecular mass of 75 kDa. As a result of glycosylation, the apparent molecular mass of rhDSC2 is approximately 85 and 100 kDa in SDS-PAGE under reducing conditions, corresponding to the mature and pro form respectively.
<b>Endotoxin</b>	< 1.0 EU per µg of the protein as determined by the LAL method.
<b>Purity</b>	> 75 % as determined by SDS-PAGE
<b>Storage</b>	Store it under sterile conditions at -20°C to -80°C upon receiving. Recommend to aliquot the protein into smaller quantities for optimal storage. Avoid repeated freeze-thaw cycles.
<b>Reconstitution</b>	It is recommended that sterile water be added to the vial to prepare a stock solution of

 Tel: 1-631-559-9269 1-516-512-3133

 Email: [info@creative-biomart.com](mailto:info@creative-biomart.com)  Fax: 1-631-938-8127

 45-1 Ramsey Road, Shirley, NY 11967, USA

0.2 ug/ul. Centrifuge the vial at 4°C before opening to recover the entire contents.

## GENE INFORMATION

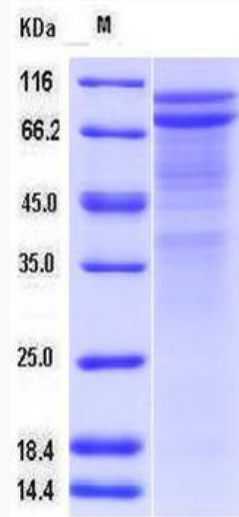
<b>Gene Name</b>	DSC2 desmocollin 2 [ Homo sapiens ]
<b>Official Symbol</b>	DSC2
<b>Synonyms</b>	DSC2; desmocollin 2; DSC3; desmocollin-2; CDHF2; cadherin family member 2; desmosomal glycoprotein II; desmosomal glycoprotein III; desmosomal glycoprotein II/III; DG2; ARVD11; DGII/III; DKFZp686I11137;
<b>Gene ID</b>	1824
<b>mRNA Refseq</b>	NM_004949
<b>Protein Refseq</b>	NP_004940
<b>MIM</b>	125645
<b>UniProt ID</b>	Q02487

 Tel: 1-631-559-9269 1-516-512-3133

 Email: [info@creative-biomart.com](mailto:info@creative-biomart.com)  Fax: 1-631-938-8127

 45-1 Ramsey Road, Shirley, NY 11967, USA

SDS-PAGE



 Tel: 1-631-559-9269 1-516-512-3133

 Email: [info@creative-biomart.com](mailto:info@creative-biomart.com)  Fax: 1-631-938-8127

 45-1 Ramsey Road, Shirley, NY 11967, USA