

Recombinant Human DSCAM Protein, GST-tagged

Cat. No. DSCAM-2882H **Lot. No.** (See product label)

SPECIFICATION

Product Overview	Human DSCAM partial ORF (NP_001380, 184 a.a. - 271 a.a.) recombinant protein with GST-tag at N-terminal.
Species	Human
Source	Wheat Germ
Description	This gene is a member of the immunoglobulin superfamily of cell adhesion molecules (Ig-CAMs), and is involved in human central and peripheral nervous system development. This gene is a candidate for Down syndrome and congenital heart disease (DSCHD). A gene encoding a similar Ig-CAM protein is located on chromosome 11. Alternatively spliced transcript variants encoding multiple isoforms have been observed for this gene. [provided by RefSeq, Oct 2012]
Molecular Mass	35.42 kDa
AA Sequence	KDVQNEGLYNYRCITRHRYSGETRQSNARLFVSDPANSAPSILDGFDHRKAMAG QRVELPCKALGHPEPDYRWLKDNPMPLELSGRF
Applications	Enzyme-linked Immunoabsorbent Assay Western Blot (Recombinant protein) Antibody Production Protein Array
Notes	Best use within three months from the date of receipt of this protein.

 Tel: 1-631-559-9269 1-516-512-3133

 Email: info@creative-biomart.com  Fax: 1-631-938-8127

 45-1 Ramsey Road, Shirley, NY 11967, USA

Storage Store at -80 centigrade. Aliquot to avoid repeated freezing and thawing.

Storage Buffer 50 mM Tris-HCl, 10 mM reduced Glutathione, pH=8.0 in the elution buffer.

GENE INFORMATION

Gene Name [DSCAM Down syndrome cell adhesion molecule \[Homo sapiens \]](#)

Official Symbol [DSCAM](#)

Synonyms DSCAM; Down syndrome cell adhesion molecule; CHD2 42; CHD2 52; CHD2; human CHD2-52 down syndrome cell adhesion molecule; CHD2-42; CHD2-52;

Gene ID [1826](#)

mRNA Refseq [NM_001389](#)

Protein Refseq [NP_001380](#)

MIM [602523](#)

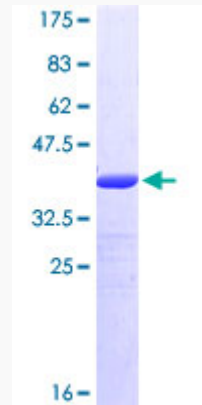
UniProt ID [O60469](#)

 Tel: 1-631-559-9269 1-516-512-3133

 Email: info@creative-biomart.com  Fax: 1-631-938-8127

 45-1 Ramsey Road, Shirley, NY 11967, USA

**Quality Control
Testing**



12.5% SDS-PAGE Stained with Coomassie Blue.

 Tel: 1-631-559-9269 1-516-512-3133

 Email: info@creative-biomart.com  Fax: 1-631-938-8127

 45-1 Ramsey Road, Shirley, NY 11967, USA