

Recombinant Human DSG2 protein(50-609aa), His-tagged

Cat. No. DSG2-4100H Lot. No. (See product label)

SPECIFICATION

Product Overview	Recombinant Human DSG2 protein(Q14126)(50-609aa), fused with N-terminal His tag, was expressed in E.coli.
Species	Human
Source	E.coli
ProteinLength	50-609aa
Form	If the delivery form is liquid, the default storage buffer is Tris/PBS-based buffer, 5%-50% glycerol. If the delivery form is lyophilized powder, the buffer before lyophilization is Tris/PBS-based buffer, 6% Trehalose, pH 8.0.
Molecular Mass	68.5 kDa
Purity	Greater than 85% as determined by SDS-PAGE.
Storage	Store at -20°C/-80°C upon receipt, aliquoting is necessary for mutiple use. Avoid repeated freeze-thaw cycles.
Reconstitution	We recommend that this vial be briefly centrifuged prior to opening to bring the contents to the bottom. Please reconstitute protein in deionized sterile water to a concentration of 0.1-1.0 mg/mL. We recommend to add 5-50% of glycerol (final concentration) and aliquot for long-term storage at -20°C/-80°C.

 Tel: 1-631-559-9269 1-516-512-3133

 Email: info@creative-biomart.com  Fax: 1-631-938-8127

 45-1 Ramsey Road, Shirley, NY 11967, USA

AA Sequence

AWITAPVALREGEDLSKKNPIAKIHSDLAERGLKITYKYTGKGITPPFGIFVFNKDT
 GELNVTSILDREETPFLLTGYALDARGNVEKPLELRIKVLVDINDNEPVFTQDVFVG
 SVEELSAHTLVMKINATDADEPNTLNSKISYRIVSLEPAYPPVFYLNKDTGEIYTTSV
 TLDREEHSSYTLTVEARDGNGEVTDKPVKQAQVQIRILDVNDNIPVVENKVLEGMVE
 ENQVNVEVTRIKVFDADEIGSDNWLANFTFASGNEGGYFHIETDAQTNEGIVTLIKEV
 DYEEMKNLDFSVIVANKAAFHKSIRSKYKPTPIPIKVKVKNVKEGIHFKSSVISIYVSES
 MDRSSKGQIIGNFQAFDEDTGLPAHARYVKLEDRDNWISVDSVTSEIKLAKLPDFES
 RYVQNGTYTVKIVAISEDYPRKTITGTVLINVEDINDNCPTLIEPVQTICHDAEYVNVTA
 EDLDGHPNSGPFSSVIDKPPGMAEKWKIARQUESTSVLLQQSEKKLGRSEIQFLISD
 NQGFCPEKQVLTTLTVCECLHGSGCREAQHDSYVG

GENE INFORMATION

Gene Name [DSG2 desmoglein 2 \[Homo sapiens \]](#)

Official Symbol [DSG2](#)

Synonyms DSG2; desmoglein 2; desmoglein-2; CDHF5; HDGC; cadherin family member 5; ARVC10; ARVD10; CMD1BB; MGC117034; MGC117036; MGC117037;

Gene ID [1829](#)

mRNA Refseq [NM_001943](#)

Protein Refseq [NP_001934](#)

MIM [125671](#)

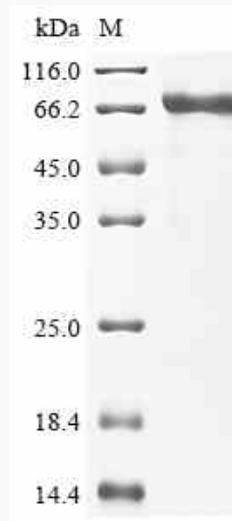
UniProt ID [Q14126](#)

 Tel: 1-631-559-9269 1-516-512-3133

 Email: info@creative-biomart.com  Fax: 1-631-938-8127

 45-1 Ramsey Road, Shirley, NY 11967, USA

SDS-PAGE



 Tel: 1-631-559-9269 1-516-512-3133

 Email: info@creative-biomart.com  Fax: 1-631-938-8127

 45-1 Ramsey Road, Shirley, NY 11967, USA