

Active Recombinant Human DSG2 protein, His-tagged

Cat. No. DSG2-510H Lot. No. (See product label)

SPECIFICATION

| | |
|-------------------------|--|
| Product Overview | Recombinant Human DSG2 protein(Q14126)(Ala50-Gly609) is expressed from HEK293 with His tag at the C-terminal. |
| Species | Human |
| Source | HEK293 |
| ProteinLength | Ala50-Gly609 |
| Form | Lyophilized from 0.22µm filtered solution in PBS (pH 7.4). Normally 8% trehalose is added as protectant before lyophilization. |
| Bio-activity | Immobilized Human DSG-2, His Tag at 0.5µg/ml (100µl/well) on the plate. Dose response curve for Anti-DSG-2 Antibody, hFc Tag with the EC50 of 10.7ng/ml determined by ELISA. |
| Molecular Mass | The protein has a predicted MW of 63.6 kDa. Due to glycosylation, the protein migrates to 75-80 kDa based on Tris-Bis PAGE result. |
| Endotoxin | Less than 1EU per µg by the LAL method. |
| Purity | > 95% as determined by Tris-Bis PAGE > 95% as determined by HPLC |
| Storage | -20 to -80°C for 12 months as supplied from date of receipt. |

 Tel: 1-631-559-9269 1-516-512-3133

 Email: info@creative-biomart.com  Fax: 1-631-938-8127

 45-1 Ramsey Road, Shirley, NY 11967, USA

-20 to -80°C for 3-6 months in unopened state after reconstitution.

2-8°C for 2-7 days after reconstitution.

Recommend to aliquot the protein into smaller quantities for optimal storage. Please avoid freeze-thaw cycles.

Reconstitution

Centrifuge tubes before opening. Reconstituting to a concentration more than 100 µg/ml is recommended. Dissolve the lyophilized protein in distilled water.

GENE INFORMATION

Gene Name [DSG2 desmoglein 2 \[Homo sapiens \]](#)

Official Symbol [DSG2](#)

Synonyms

DSG2; desmoglein 2; desmoglein-2; CDHF5; HDGC; cadherin family member 5; ARVC10; ARVD10; CMD1BB; MGC117034; MGC117036; MGC117037

Gene ID [1829](#)

mRNA Refseq [NM_001943](#)

Protein Refseq [NP_001934](#)

MIM [125671](#)

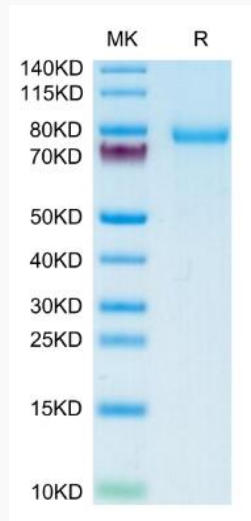
UniProt ID [Q14126](#)

 Tel: 1-631-559-9269 1-516-512-3133

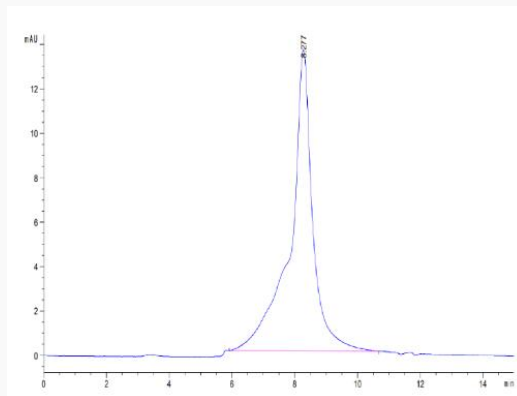
 Email: info@creative-biomart.com  Fax: 1-631-938-8127

 45-1 Ramsey Road, Shirley, NY 11967, USA

Tris-Bis PAGE



SEC-HPLC

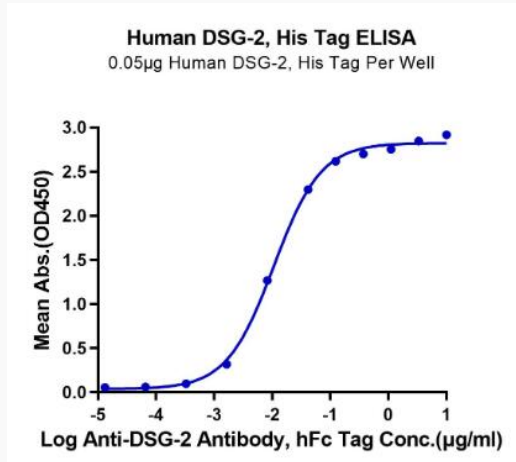



 Tel: 1-631-559-9269 1-516-512-3133

 Email: info@creative-biomart.com  Fax: 1-631-938-8127

 45-1 Ramsey Road, Shirley, NY 11967, USA

ELISA Data



 Tel: 1-631-559-9269 1-516-512-3133

 Email: info@creative-biomart.com  Fax: 1-631-938-8127

 45-1 Ramsey Road, Shirley, NY 11967, USA