

Recombinant Human DSG3 protein, His-tagged

Cat. No. DSG3-4070H Lot. No. (See product label)

SPECIFICATION

Product Overview	Recombinant Human DSG3 protein(P32926)(Glu50-Arg615), fused with C-terminal His tag, was expressed in HEK293.
Species	Human
Source	HEK293
ProteinLength	Glu50-Arg615
Tag	C-His
Form	Supplied as 0.22µm filtered solution in PBS (pH 7.4).
Bio-activity	Immobilized Human DSG3, His Tag at 0.5ug/ml (100ul/Well) on the plate. Dose response curve for Anti-DSG3 Antibody, hFc Tag with the EC50 4.5ng/ml determined by ELISA.
Molecular Mass	The protein has a predicted MW of 64 kDa. Due to glycosylation, the protein migrates to 70-75 kDa based on Tris-Bis PAGE result.
Endotoxin	Less than 1EU per µg by the LAL method.
Purity	> 95% as determined by Tris-Bis PAGE;> 95% as determined by HPLC
Storage	Valid for 12 months from date of receipt when stored at -80°C. Recommend to aliquot

 Tel: 1-631-559-9269 1-516-512-3133

 Email: info@creative-biomart.com  Fax: 1-631-938-8127

 45-1 Ramsey Road, Shirley, NY 11967, USA

the protein into smaller quantities for optimal storage. Please do not repeated freeze-thaw cycles.

Reconstitution

It is recommended that sterile water be added to the vial to prepare a stock solution of 0.2 ug/ul. Centrifuge the vial at 4°C before opening to recover the entire contents.

GENE INFORMATION

Gene Name [DSG3 desmoglein 3 \[Homo sapiens \]](#)

Official Symbol [DSG3](#)

Synonyms

DSG3; desmoglein 3; desmoglein 3 (pemphigus vulgaris antigen); desmoglein-3; CDHF6; pemphigus vulgaris antigen; cadherin family member 6; 130-kD pemphigus vulgaris antigen; 130 kDa pemphigus vulgaris antigen; PVA; DKFZp686P23184;

Gene ID [1830](#)

mRNA Refseq [NM_001944](#)

Protein Refseq [NP_001935](#)

MIM [169615](#)

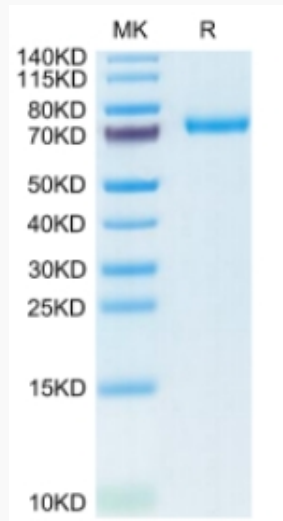
UniProt ID [P32926](#)

 Tel: 1-631-559-9269 1-516-512-3133

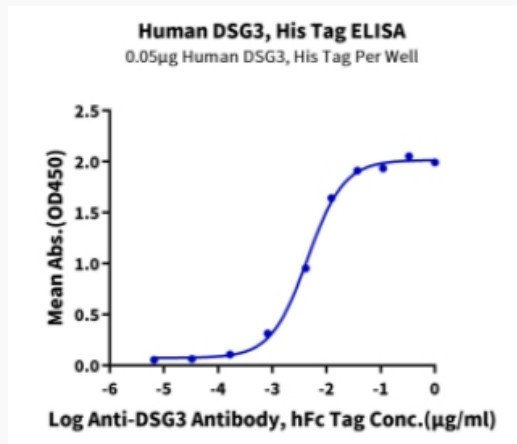
 Email: info@creative-biomart.com  Fax: 1-631-938-8127

 45-1 Ramsey Road, Shirley, NY 11967, USA

Tris-Bis PAGE



ELISA Data



Tel: 1-631-559-9269 1-516-512-3133

Email: info@creative-biomart.com Fax: 1-631-938-8127

45-1 Ramsey Road, Shirley, NY 11967, USA