

Recombinant Full Length Human DTL Protein, C-Flag-tagged

Cat. No. DTL-1751HFL Lot. No. (See product label)

SPECIFICATION

Product Overview	Recombinant Full Length Human DTL Protein, fused to Flag-tag at C-terminus, was expressed in Mammalian cells.
Species	Human
Source	Mammalian Cells
Description	Contributes to ubiquitin-protein transferase activity. Involved in several processes, including protein ubiquitination; regulation of G2/M transition of mitotic cell cycle; and translesion synthesis. Located in centrosome; cytosol; and nuclear lumen. Part of Cul4A-RING E3 ubiquitin ligase complex and Cul4B-RING E3 ubiquitin ligase complex.
Form	25 mM Tris HCl, pH 7.3, 100 mM glycine, 10% glycerol.
Molecular Mass	79.3 kDa
AA Sequence	MLFNSVLRQPQLGVLRNGWSSQYPLQSLTGYQC SGNDEHTSYGETGVPVPPFGC TFSSAPNMEHVLAVA NEEGFVRLYNTESQSFRKKCFKEWMAHWNVFDLAWVPG ELKLVTAAAGDQTAKFWDVKAGELIGTCKGHQ CSLKSVAFSKFEKAVFCTGGRDGN MVWDTRCNKKDGFYRQVNQISGAHNTSDKQTPSKPKKKQNSKGLA PSVDFQQSV TVVLFQDENTLVSAGAVDGIKVVWDLRKNYTA YRQEPIASKSFLYPGSSTRKLGYS SLILD STGSTLFANCTDDNIYMFNMTGLKTSPVAIFNGHQNSTFYVKSSLS PDDQFLVS GSSDEAAYIWKVSTPW QPPTVLLGHSQEVT SVCWCPSDFTKIATCSDDNTLKIWRL NRGLEEKPGGDKLSTVGWASQKKKESR PGL VTVTSSQSTPAKAPRVKCNPSNSSP

 Tel: 1-631-559-9269 1-516-512-3133

 Email: info@creative-biomart.com  Fax: 1-631-938-8127

 45-1 Ramsey Road, Shirley, NY 11967, USA

SSAACAPSCAGDLPLPSNTPTFSIKTSPAKARSPINRRGSVSSVS PKPPSSFKMSIR
 NWVTRTPSSSPITPPASETKIMSPRKALIPVSQKSSQAEACSESRNRVKRRLDSSC
 L ESVKQKCVKSCNCVTELDGQVENLHLDLCCLAGNQEDLSKDSLGPCKSSKIEGAG
 TSISEPPSPISPYAS ESCGTLPLPLRPCGEGSEMVGKENS SPENKNWLLAMAARKK
 AENSPRSPSSQTPNSRRQSGKTLPSVPT
 ITPSSMRKICTYFHRKSQEDFCGPEHSTELTRTRPLEQKLISEEDLAANDILDYKDDD
 DKV

Purity > 80% as determined by SDS-PAGE and Coomassie blue staining.

Stability Stable for 12 months from the date of receipt of the product under proper storage and handling conditions. Avoid repeated freeze-thaw cycles.

Storage Store at -80 centigrade.

Concentration >50 ug/mL as determined by microplate BCA method.

Preparation Recombinant protein was captured through anti-DDK affinity column followed by conventional chromatography steps.

Protein Families Druggable Genome

Full Length Full L.

GENE INFORMATION

Gene Name DTL denticleless E3 ubiquitin protein ligase homolog [Homo sapiens (human)]

Official Symbol DTL

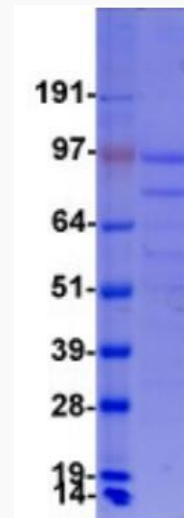
Synonyms CDT2; RAMP; DCAF2; L2DTL

 Tel: 1-631-559-9269 1-516-512-3133

 Email: info@creative-biomart.com  Fax: 1-631-938-8127

 45-1 Ramsey Road, Shirley, NY 11967, USA

Gene ID	51514
mRNA Refseq	NM_016448.4
Protein Refseq	NP_057532.4
MIM	610617
UniProt ID	Q9NZJ0



Coomassie blue staining of purified DTL protein.

Tel: 1-631-559-9269 1-516-512-3133

Email: info@creative-biomart.com Fax: 1-631-938-8127

45-1 Ramsey Road, Shirley, NY 11967, USA