

Recombinant Human DTNB Protein, GST-tagged

Cat. No. DTNB-2900H Lot. No. (See product label)

SPECIFICATION

Product Overview	Human DTNB full-length ORF (AAH16655.1, 1 a.a. - 560 a.a.) recombinant protein with GST-tag at N-terminal.
Species	Human
Source	Wheat Germ
Description	This gene encodes dystrobrevin beta, a component of the dystrophin-associated protein complex (DPC). The DPC consists of dystrophin and several integral and peripheral membrane proteins, including dystroglycans, sarcoglycans, syntrophins and dystrobrevin alpha and beta. The DPC localizes to the sarcolemma and its disruption is associated with various forms of muscular dystrophy. Dystrobrevin beta is thought to interact with syntrophin and the DP71 short form of dystrophin. [provided by RefSeq, Mar 2016]
Molecular Mass	87.23 kDa
AA Sequence	MIEESGNKRKTMAEKRQLFIEMRAQNFDVIRLSTYRTACKLRFVQKRCNLHLVDIWN MIEAFRDNGLNLDHTTEISVSRLETVISSIIYQLNKRLPSTHQISVEQSISLLLLNFMIA AYDSEGRGKLTVFSVKAMLATMCGGKMLDKLRYVFSQMSDSNGLMIFSKFDQFLKE VLKLPTAVFEGPSFGYTEHSVRTCFPQQRKIMLNMFLDTMMADPPPQCLVWLPLMH RLAHVENVFHPVECSYCRCESMMGFRYRCQQCHNYQLCQNCFWRGHAGGPHSN QHQMKEHSSWKSPAKKLSHAISKSLGCVPTREPPHPVFPEQPEKPLDLAHIVPPRPL TNMNDTMVSHMSSGVPTPTKSVLDSPSRLDEEHRLIARYAARLAAEAGNVTRPPTD

 Tel: 1-631-559-9269 1-516-512-3133

 Email: info@creative-biomart.com  Fax: 1-631-938-8127

 45-1 Ramsey Road, Shirley, NY 11967, USA

LSFNFDANKQQRQLIAELENKNREILQEIQRLRLEHEQASQPTPEKAQQNPTLLAELR
 LLRQRKDELEQRMSALQESRRELMVQLEELMKLLKAQATGSPHTSPHGGGRPMP
 MPVIRSTSAGSTPTHCPQDSLSGVGGDVQEAFQAEEGAEKEEEMQNGKDRG

Applications	Enzyme-linked Immunoabsorbent Assay Western Blot (Recombinant protein) Antibody Production Protein Array
Notes	Best use within three months from the date of receipt of this protein.
Storage	Store at -80 centigrade. Aliquot to avoid repeated freezing and thawing.
Storage Buffer	50 mM Tris-HCl, 10 mM reduced Glutathione, pH=8.0 in the elution buffer.

GENE INFORMATION

Gene Name	DTNB dystrobrevin, beta [Homo sapiens]
Official Symbol	DTNB
Synonyms	DTNB; dystrobrevin, beta; dystrobrevin beta; DTN-B; beta-dystrobrevin; MGC17163; MGC57126;
Gene ID	1838
mRNA Refseq	NM_001256303
Protein Refseq	NP_001243232
MIM	602415

 Tel: 1-631-559-9269 1-516-512-3133

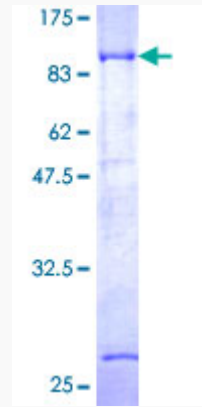
 Email: info@creative-biomart.com  Fax: 1-631-938-8127

 45-1 Ramsey Road, Shirley, NY 11967, USA

UniProt ID

O60941

Quality Control
Testing



12.5% SDS-PAGE Stained with Coomassie Blue.

 Tel: 1-631-559-9269 1-516-512-3133

 Email: info@creative-biomart.com  Fax: 1-631-938-8127

 45-1 Ramsey Road, Shirley, NY 11967, USA