

Recombinant Human DTWD1 Protein, GST-tagged

Cat. No. DTWD1-2904H Lot. No. (See product label)

SPECIFICATION

Product Overview	Human DTWD1 full-length ORF (NP_064619.2, 1 a.a. - 304 a.a.) recombinant protein with GST-tag at N-terminal.
Species	Human
Source	Wheat Germ
Description	DTWD1 (DTW Domain Containing 1) is a Protein Coding gene.
Molecular Mass	61.6 kDa
AA Sequence	MSLNPPIFLKRSEENSSK FVETKQSQTTSIASEDPLQNLCLASQEV LQKAQQSGRSK CLKCGGSRMFYCYTCYVPVENVPIEQIPLVKLPLKIDIIKHPNETDGKSTAIHAKLLAPE FVNIYTYP C IPEYEEKDHEVALIFPGPQSISIKDISFHLQKRIQNNVRGKNDDPKPSF KRKRTEEQEFCDLNSKCKGTTLKKIIFIDSTWNQTNKIFTDERLQGLLQVELKTRKT CFWRHQK GKPDFTLSTIEAIYYFLVDYHTDILKEKYRGQYDNLFFYSFMYQLIKNAK CSGDKETGKLTH
Applications	Enzyme-linked Immunoabsorbent Assay Western Blot (Recombinant protein) Antibody Production Protein Array
Notes	Best use within three months from the date of receipt of this protein.

 Tel: 1-631-559-9269 1-516-512-3133

 Email: info@creative-biomart.com  Fax: 1-631-938-8127

 45-1 Ramsey Road, Shirley, NY 11967, USA

Storage Store at -80 centigrade. Aliquot to avoid repeated freezing and thawing.

Storage Buffer 50 mM Tris-HCl, 10 mM reduced Glutathione, pH=8.0 in the elution buffer.

GENE INFORMATION

Gene Name DTWD1 DTW domain containing 1 [Homo sapiens (human)]

Official Symbol DTWD1

Synonyms DTWD1; DTW domain containing 1; DTW Domain Containing 1; DTW Domain-Containing Protein 1; X 009 Protein; MDS009; DTW domain-containing protein 1; x 009 protein

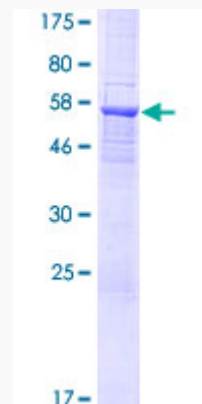
Gene ID 56986

mRNA Refseq NM_001144955

Protein Refseq NP_001138427

UniProt ID Q8N5C7

Quality Control Testing



 Tel: 1-631-559-9269 1-516-512-3133

 Email: info@creative-biomart.com  Fax: 1-631-938-8127

 45-1 Ramsey Road, Shirley, NY 11967, USA



12.5% SDS-PAGE Stained with Coomassie Blue.

 Tel: 1-631-559-9269 1-516-512-3133

 Email: info@creative-biomart.com  Fax: 1-631-938-8127

 45-1 Ramsey Road, Shirley, NY 11967, USA