

## Recombinant Human DUB3 Protein, GST-tagged

Cat. No. DUB3-2913H Lot. No. (See product label)

### SPECIFICATION

<b>Product Overview</b>	Human DUB3 partial ORF ( NP_958804, 431 a.a. - 530 a.a.) recombinant protein with GST-tag at N-terminal.
<b>Species</b>	Human
<b>Source</b>	Wheat Germ
<b>Description</b>	DUB3 is a member of the ubiquitin processing protease (UBP) subfamily of deubiquitinating enzymes. See USP1 (MIM 603478) for background information.[supplied by OMIM, Mar 2008]
<b>Molecular Mass</b>	36.74 kDa
<b>AA Sequence</b>	ESTLDHWKFLQEQNKTKEPFNVRKVEGTLPPDVLVIHQSKYKCGMKNHHPEQQSSL LNLSSSTTPTHQESMNTGTLASLRGRARRSKGKNKHSKRALLVCQ
<b>Applications</b>	Enzyme-linked Immunoabsorbent Assay Western Blot (Recombinant protein) Antibody Production Protein Array
<b>Notes</b>	Best use within three months from the date of receipt of this protein.
<b>Storage</b>	Store at -80 centigrade. Aliquot to avoid repeated freezing and thawing.

 Tel: 1-631-559-9269 1-516-512-3133

 Email: [info@creative-biomart.com](mailto:info@creative-biomart.com)  Fax: 1-631-938-8127

 45-1 Ramsey Road, Shirley, NY 11967, USA

**Storage Buffer** 50 mM Tris-HCl, 10 mM reduced Glutathione, pH=8.0 in the elution buffer.

## GENE INFORMATION

**Gene Name** [USP17L2 ubiquitin specific peptidase 17-like family member 2 \[ Homo sapiens \(human\) \]](#)

**Official Symbol** [DUB3](#)

**Synonyms** USP17L2; ubiquitin specific peptidase 17-like family member 2; Ubiquitin Specific Peptidase 17-Like Family Member 2; Ubiquitin-Specific-Processing Protease 17-Like Protein 2; Ubiquitin Carboxyl-Terminal Hydrolase 17-Like Protein 2; Deubiquitinating Enzyme 17-Like Protein 2; Ubiquitin Thioesterase 17-Like Protein 2; Ubiquitin Specific Peptidase 17-Like 2; Deubiquitinating Protein 3; Deubiquitinating Enzyme 3; DUB-3; USP17; DUB3; Ubiquitin Thiolesterase 17-Like Protein 2; Ubiquitin Carboxyl-Terminal Hydrolase 17; EC 3.4.19.12; EC 3.1.2.15; USP17L; USP17H; USP17I; USP17J; USP17K; USP17M; ubiquitin carboxyl-terminal hydrolase 17; deubiquitinating enzyme 17-like protein 2; deubiquitinating enzyme 3; deubiquitinating protein 3; ubiquitin carboxyl-terminal hydrolase 17-like protein 2; ubiquitin specific peptidase 17-like 2; ubiquitin thioesterase 17-like protein 2; ubiquitin thiolesterase 17-like protein 2; ubiquitin-specific-processing protease 17-like protein 2; EC 3.4.19.12

**Gene ID** [377630](#)

**mRNA Refseq** [NM\\_201402](#)

**Protein Refseq** [NP\\_958804](#)

**MIM** [610186](#)

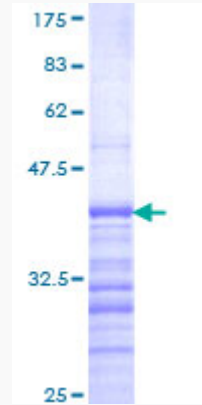
**UniProt ID** [Q6R6M4](#)

 Tel: 1-631-559-9269 1-516-512-3133

 Email: [info@creative-biomart.com](mailto:info@creative-biomart.com)  Fax: 1-631-938-8127

 45-1 Ramsey Road, Shirley, NY 11967, USA

**Quality Control  
Testing**



12.5% SDS-PAGE Stained with Coomassie Blue.

 Tel: 1-631-559-9269 1-516-512-3133

 Email: [info@creative-biomart.com](mailto:info@creative-biomart.com)  Fax: 1-631-938-8127

 45-1 Ramsey Road, Shirley, NY 11967, USA