

Recombinant Human DUOX1 Protein, GST-tagged

Cat. No. DUOX1-2915H **Lot. No.** (See product label)

SPECIFICATION

Product Overview	Human DUOX1 partial ORF (NP_059130, 941 a.a. - 1028 a.a.) recombinant protein with GST-tag at N-terminal.
Species	Human
Source	Wheat Germ
Description	The protein encoded by this gene is a glycoprotein and a member of the NADPH oxidase family. The synthesis of thyroid hormone is catalyzed by a protein complex located at the apical membrane of thyroid follicular cells. This complex contains an iodide transporter, thyroperoxidase, and a peroxide generating system that includes proteins encoded by this gene and the similar DUOX2 gene. This protein is known as dual oxidase because it has both a peroxidase homology domain and a gp91phox domain. This protein generates hydrogen peroxide and thereby plays a role in the activity of thyroid peroxidase, lactoperoxidase, and in lactoperoxidase-mediated antimicrobial defense at mucosal surfaces. Two alternatively spliced transcript variants encoding the same protein have been described for this gene. [provided by RefSeq, Jul 2012]
Molecular Mass	35.42 kDa
AA Sequence	VEVPEVIKDLRASYISQDMICSPRV SARCSRSDIETELTPQLQCPMDTDPPEI RRRFGKKVTSFQPLLFTEAHREKFQRSCLH
Applications	Enzyme-linked Immunoabsorbent Assay

 Tel: 1-631-559-9269 1-516-512-3133

 Email: info@creative-biomart.com  Fax: 1-631-938-8127

 45-1 Ramsey Road, Shirley, NY 11967, USA

Western Blot (Recombinant protein)
 Antibody Production
 Protein Array

Notes	Best use within three months from the date of receipt of this protein.
Storage	Store at -80 centigrade. Aliquot to avoid repeated freezing and thawing.
Storage Buffer	50 mM Tris-HCl, 10 mM reduced Glutathione, pH=8.0 in the elution buffer.

GENE INFORMATION

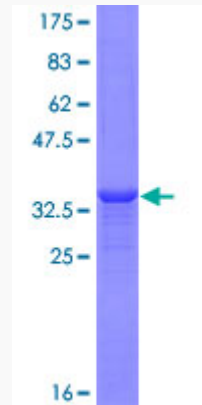
Gene Name	DUOX1 dual oxidase 1 [Homo sapiens]
Official Symbol	DUOX1
Synonyms	DUOX1; dual oxidase 1; flavoprotein NADPH oxidase; LNOX1; NADPH thyroid oxidase 1; nicotinamide adenine dinucleotide phosphate oxidase; NOXEF1; THOX1; long NOX 1; large NOX 1; thyroid oxidase 1; MGC138840; MGC138841;
Gene ID	53905
mRNA Refseq	NM_017434
Protein Refseq	NP_059130
MIM	606758
UniProt ID	Q9NRD9

 Tel: 1-631-559-9269 1-516-512-3133

 Email: info@creative-biomart.com  Fax: 1-631-938-8127

 45-1 Ramsey Road, Shirley, NY 11967, USA

**Quality Control
Testing**



12.5% SDS-PAGE Stained with Coomassie Blue.

 Tel: 1-631-559-9269 1-516-512-3133

 Email: info@creative-biomart.com  Fax: 1-631-938-8127

 45-1 Ramsey Road, Shirley, NY 11967, USA