

## Recombinant Human DUPD1 Protein, GST-tagged

**Cat. No.** DUPD1-2917H    **Lot. No.** (See product label)

### SPECIFICATION

<b>Product Overview</b>	Human DUPD1 full-length ORF ( NP_001003892.1, 1 a.a. - 220 a.a.) recombinant protein with GST-tag at N-terminal.
<b>Species</b>	Human
<b>Source</b>	Wheat Germ
<b>Description</b>	DUPD1 (Dual Specificity Phosphatase And Pro Isomerase Domain Containing 1) is a Protein Coding gene. Diseases associated with DUPD1 include Cervix Carcinoma. GO annotations related to this gene include phosphatase activity and protein tyrosine/serine/threonine phosphatase activity. An important paralog of this gene is DUSP13.
<b>Molecular Mass</b>	51.7 kDa
<b>AA Sequence</b>	MTSGEVKTS LKNAYSSAKRLSPKMEEEEGEEEDYCTPGAFELERLFWKGGSPQYTHV NEVWPKLYIGDEATALDRYRLQKAGFTHVLNAAHGRWNVDTGPDYYRDMDIQYHG VEADDLPTFDLSVFFYPAAAFIDRALSDDHKILVHCVMGRSRSATLVLAYLMIHKDM TLVD AIQQVAKNRCVLPNRGFLKQLRELDKQLVQQRRRSQRQDGEEEDGREL
<b>Applications</b>	Enzyme-linked Immunoabsorbent Assay Western Blot (Recombinant protein) Antibody Production Protein Array

 Tel: 1-631-559-9269    1-516-512-3133

 Email: [info@creative-biomart.com](mailto:info@creative-biomart.com)     Fax: 1-631-938-8127

 45-1 Ramsey Road, Shirley, NY 11967, USA

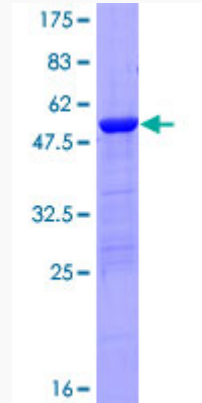
<b>Notes</b>	Best use within three months from the date of receipt of this protein.
<b>Storage</b>	Store at -80 centigrade. Aliquot to avoid repeated freezing and thawing.
<b>Storage Buffer</b>	50 mM Tris-HCl, 10 mM reduced Glutathione, pH=8.0 in the elution buffer.
<b>GENE INFORMATION</b>	
<b>Gene Name</b>	DUPD1 dual specificity phosphatase and pro isomerase domain containing 1 [ Homo sapiens ]
<b>Official Symbol</b>	DUPD1
<b>Synonyms</b>	DUPD1; dual specificity phosphatase and pro isomerase domain containing 1; dual specificity phosphatase DUPD1; DUSP27; dual specificity phosphatase 27; atypical dual-specific protein phosphatase; FMDSP;
<b>Gene ID</b>	338599
<b>mRNA Refseq</b>	NM_001003892
<b>Protein Refseq</b>	NP_001003892
<b>UniProt ID</b>	Q68J44

 Tel: 1-631-559-9269 1-516-512-3133

 Email: [info@creative-biomart.com](mailto:info@creative-biomart.com)  Fax: 1-631-938-8127

 45-1 Ramsey Road, Shirley, NY 11967, USA

**Quality Control  
Testing**



12.5% SDS-PAGE Stained with Coomassie Blue.

 Tel: 1-631-559-9269 1-516-512-3133

 Email: [info@creative-biomart.com](mailto:info@creative-biomart.com)  Fax: 1-631-938-8127

 45-1 Ramsey Road, Shirley, NY 11967, USA