

Recombinant Human DUS3L Protein, Myc/DDK-tagged, C13 and N15-labeled

Cat. No. DUS3L-1102H Lot. No. (See product label)

SPECIFICATION

Product Overview

DUS3L MS Standard C13 and N15-labeled recombinant protein (NP_064560) with a C-terminal MYC/DDK tag, was expressed in HEK293 cells.

Species

Human

Source

HEK293

Description

DUS3L (Dihydrouridine Synthase 3 Like) is a Protein Coding gene. Diseases associated with DUS3L include Myopathy, Congenital, Compton-North and Cholestasis-Lymphedema Syndrome. Gene Ontology (GO) annotations related to this gene include tRNA dihydrouridine synthase activity. An important paralog of this gene is DUS1L.

Molecular Mass

72.5 kDa

AA Sequence

```
MAEGTAEAPLENGGGGDSGAGALERGVAPIKRQYLTTKEQFHQFLEAKGQEKTCR
ETEVGDPAGNELAEPEAKRIRLEDGQTADGQTEEAEPGEQLQTQKRARGQNKGR
PHVKPTNYDKNRLCPSLIQESAACFFGDRCRFLHDVGRYLETKPADLGPVLFET
FGRCPYGVTCRFAGAHLGPEGQNLVQEELAARGTQPPSIRNGLDKALQQQLRKRE
VRFERAEQALRRFSQGPTPAAAVPEGTAAEGAPRQENCGAQQVPAGPGTSTPPSS
PVRTCGPLTDEDVVRLRPCEKKRLDIRGKLYLAPLTTGPNLPFRRICKRFGADVTCG
EMAVCTNLLQGQMSEWALLKRHCEDIFGVQLEGAFPDTMTKCAELLSRTVEVDFV
DINVGCPIDLVIKGGGGCALMNRSTKFQQIVRGMNQVLDVPLTVKIRTGVQERVNLA
```

Tel: 1-631-559-9269 1-516-512-3133

Email: info@creative-biomart.com Fax: 1-631-938-8127

45-1 Ramsey Road, Shirley, NY 11967, USA

HRLLELRDVGVALVTLHGRSREQRYTKLADWQYIEECVQAASPMPLFGNGDILSF
 EDANRAMQTGVTGIMIARGALLKPWLFTEIKEQRHWDISSERLDILRDFTNYGLEH
 WGSQTQGVKTRRFLLEWLSFLCRYVPVGLLERLPQRINERPPYYLGRDYLETLMMA
 SQKAADWIRISEMLLGPVPPSFAFLPKHKANAYKSGPTRTRPLEQKLISEEDLAANDI
 LDYKDDDDKV

Purity > 80% as determined by SDS-PAGE and Coomassie blue staining

Stability Stable for 3 months from receipt of products under proper storage and handling conditions.

Storage Store at -80 centigrade. Avoid repeated freeze-thaw cycles.

Concentration 50 µg/mL as determined by BCA

Storage Buffer 100 mM glycine, 25 mM Tris-HCl, pH 7.3.

GENE INFORMATION

Gene Name DUS3L dihydrouridine synthase 3 like [Homo sapiens (human)]

Official Symbol DUS3L

Synonyms DUS3L; dihydrouridine synthase 3-like (S. cerevisiae); tRNA-dihydrouridine(47) synthase [NAD(P)(+)]-like; DUS3; FLJ13896;

Gene ID 56931

mRNA Refseq NM_020175

Protein Refseq NP_064560

 Tel: 1-631-559-9269 1-516-512-3133

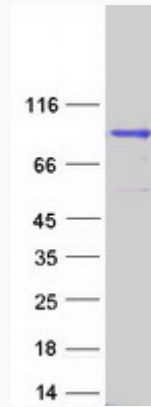
 Email: info@creative-biomart.com  Fax: 1-631-938-8127

 45-1 Ramsey Road, Shirley, NY 11967, USA

UniProt ID

Q96G46

SDS-PAGE



 Tel: 1-631-559-9269 1-516-512-3133

 Email: info@creative-biomart.com  Fax: 1-631-938-8127

 45-1 Ramsey Road, Shirley, NY 11967, USA