

## Recombinant Human DUS3L Protein, GST-tagged

Cat. No. DUS3L-2919H Lot. No. (See product label)

### SPECIFICATION

<b>Product Overview</b>	Human DUS3L full-length ORF ( NP_064560.1, 1 a.a. - 650 a.a.) recombinant protein with GST-tag at N-terminal.
<b>Species</b>	Human
<b>Source</b>	Wheat Germ
<b>Description</b>	DUS3L (Dihydrouridine Synthase 3 Like) is a Protein Coding gene. GO annotations related to this gene include poly(A) RNA binding and tRNA dihydrouridine synthase activity. An important paralog of this gene is ENSG00000267157.
<b>Molecular Mass</b>	98.9 kDa
<b>AA Sequence</b>	<p>MAEGTAEAPLENGGGGDSGAGALERGVAPIKRQYLTTKEQFHQFLEAKGQEKTCR          ETEVGDPAGNELAEPEAKRIRLEDGQTADGQTEEAAPGEQLQTQKRARGQNKGR          PHVKPTNYDKNRLCPSLIQESAAKCFFGDRCRFLHDVGRYLETKPADLGPRCVLFET          FGRCPYGVTCRFAGAHLGPEGQNLVQEELAARGTQPPSIRNGLDKALQQQLRKRE          VRFERAEQALRRFSQGPTPAAAVPEGTAAEGAPRQENCGAQQVPAGPGTSTPPSS          PVRTCGLPTDEDVVRLRPCEKKRLDIRGKLYLAPLTTGPNLFFRICKRFGADVTCG          EMAVCTNLLQGQMSEWALLKRHQCEDIFGVQLEGAFPDTMTKCAELLSRTVEVDFV          DINVGCPIDLVIYKGGGKCALMNRSTKFQQIVRGMNQVLDVPLTVKIRTGVQERVNLA          HRLLELRDVGVALVTLHGRSREQRYTKLADWQYIEECVQAASPMPLFGNGDILSF          EDANRAMQTGVTGIMIARGALLKPWLFTEIKEQRHWDISSERLDILRDFTNYLEH          WGSQTQGVKTRRFLLEWLSFLCRYVPVGLLERLPQRINERPPYYLGRDYLETMA</p>

Tel: 1-631-559-9269 1-516-512-3133

Email: [info@creative-biomart.com](mailto:info@creative-biomart.com) Fax: 1-631-938-8127

45-1 Ramsey Road, Shirley, NY 11967, USA



SQKAADWIRISEMLLGPVPPSFAFLPKHKANAYK

**Applications**

Enzyme-linked Immunoabsorbent Assay  
Western Blot (Recombinant protein)  
Antibody Production  
Protein Array

**Notes**

Best use within three months from the date of receipt of this protein.

**Storage**

Store at -80 centigrade. Aliquot to avoid repeated freezing and thawing.

**Storage Buffer**

50 mM Tris-HCl, 10 mM reduced Glutathione, pH=8.0 in the elution buffer.

**GENE INFORMATION**

**Gene Name**

DUS3L dihydrouridine synthase 3-like (*S. cerevisiae*) [ *Homo sapiens* ]

**Official Symbol**

DUS3L

**Synonyms**

DUS3L; dihydrouridine synthase 3-like (*S. cerevisiae*); tRNA-dihydrouridine(47) synthase [NAD(P)(+)]-like; DUS3; FLJ13896;

**Gene ID**

56931

**mRNA Refseq**

NM\_001161619

**Protein Refseq**

NP\_001155091

**UniProt ID**

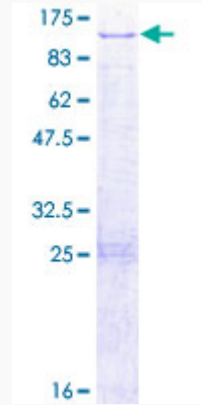
Q96G46

Tel: 1-631-559-9269 1-516-512-3133

Email: [info@creative-biomart.com](mailto:info@creative-biomart.com) Fax: 1-631-938-8127

45-1 Ramsey Road, Shirley, NY 11967, USA

**Quality Control  
Testing**



12.5% SDS-PAGE Stained with Coomassie Blue.

 Tel: 1-631-559-9269 1-516-512-3133

 Email: [info@creative-biomart.com](mailto:info@creative-biomart.com)  Fax: 1-631-938-8127

 45-1 Ramsey Road, Shirley, NY 11967, USA