

Recombinant Human DUSP18 Protein, Myc/DDK-tagged, C13 and N15-labeled

Cat. No. DUSP18-3932H **Lot. No.** (See product label)

SPECIFICATION

Product Overview	DUSP18 MS Standard C13 and N15-labeled recombinant protein (NP_689724) with a C-terminal MYC/DDK tag, was expressed in HEK293 cells.
Species	Human
Source	HEK293
Description	Dual-specificity phosphatases (DUSPs) constitute a large heterogeneous subgroup of the type I cysteine-based protein-tyrosine phosphatase superfamily. DUSPs are characterized by their ability to dephosphorylate both tyrosine and serine/threonine residues. They have been implicated as major modulators of critical signaling pathways. DUSP18 contains the consensus DUSP C-terminal catalytic domain but lacks the N-terminal CH2 domain found in the MKP (mitogen-activated protein kinase phosphatase) class of DUSPs.
Molecular Mass	20.9 kDa
AA Sequence	MTAPSCAFPVQFRQPSVSGLSQITKSPLYISNGVAANNKMLLSSNQITMVINVSVEVVN TLYEDIQYMQVPVADSPNSRLCDDFFDPIADHIHSVEMKQGRTLLHCAAGVSRSAALC LAYLMKYHAMSLDAHTWTKSCRPIIRPNSGFWEQLIHYEFLFGKNTVHMVSSPVG MIPDIYEKEVRLMIPLTRTRPLEQKLISEEDLAANDILDYKDDDDKV
Purity	> 80% as determined by SDS-PAGE and Coomassie blue staining

 Tel: 1-631-559-9269 1-516-512-3133

 Email: info@creative-biomart.com  Fax: 1-631-938-8127

 45-1 Ramsey Road, Shirley, NY 11967, USA

Stability	Stable for 3 months from receipt of products under proper storage and handling conditions.
Storage	Store at -80 centigrade. Avoid repeated freeze-thaw cycles.
Concentration	50 µg/mL as determined by BCA
Storage Buffer	100 mM glycine, 25 mM Tris-HCl, pH 7.3.

GENE INFORMATION

Gene Name	DUSP18 dual specificity phosphatase 18 [Homo sapiens (human)]
Official Symbol	DUSP18
Synonyms	DUSP18; dual specificity phosphatase 18; dual specificity protein phosphatase 18; DUSP20; LMW-DSP20; low molecular weight dual specificity phosphatase 20; DSP18; LMWDSP20; bK963H5.1; MGC32658;
Gene ID	150290
mRNA Refseq	NM_152511
Protein Refseq	NP_689724
MIM	611446
UniProt ID	Q8NEJ0

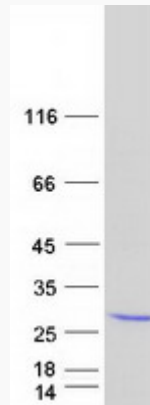
 Tel: 1-631-559-9269 1-516-512-3133

 Email: info@creative-biomart.com  Fax: 1-631-938-8127

 45-1 Ramsey Road, Shirley, NY 11967, USA



SDS-PAGE



Tel: 1-631-559-9269 1-516-512-3133

Email: info@creative-biomart.com Fax: 1-631-938-8127

45-1 Ramsey Road, Shirley, NY 11967, USA