

## Recombinant Human DUSP22 Protein, GST-tagged

**Cat. No.** DUSP22-2934H    **Lot. No.** (See product label)

### SPECIFICATION

<b>Product Overview</b>	Human DUSP22 full-length ORF ( NP_064570.1, 1 a.a. - 184 a.a.) recombinant protein with GST-tag at N-terminal.
<b>Species</b>	Human
<b>Source</b>	Wheat Germ
<b>Description</b>	DUSP22 (Dual Specificity Phosphatase 22) is a Protein Coding gene. Diseases associated with DUSP22 include Alk-Negative Anaplastic Large Cell Lymphoma and Lymphatic System Cancer. GO annotations related to this gene include phosphatase activity and protein tyrosine/serine/threonine phosphatase activity. An important paralog of this gene is DUSP15.
<b>Molecular Mass</b>	47.3 kDa
<b>AA Sequence</b>	MGNGMKNKILPGLYIGNFKDARDAEQLSKNKVTHILSVHDSARPMLEGVKYLCIPAAD SPSQNLTRHFKESIKFIHECRLRGESCLVHCLAGVSRVTLVIAYIMTVTDFGWEDAL HTVRAGRSCANPNVGFQRQLQEFKHEVHQYRQWLKEEYGESPLQDAEEAKNILA APGILKFWAFLRRL
<b>Applications</b>	Enzyme-linked Immunoabsorbent Assay Western Blot (Recombinant protein) Antibody Production Protein Array

 Tel: 1-631-559-9269    1-516-512-3133

 Email: [info@creative-biomart.com](mailto:info@creative-biomart.com)     Fax: 1-631-938-8127

 45-1 Ramsey Road, Shirley, NY 11967, USA

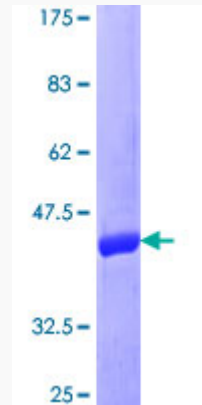
<b>Notes</b>	Best use within three months from the date of receipt of this protein.
<b>Storage</b>	Store at -80 centigrade. Aliquot to avoid repeated freezing and thawing.
<b>Storage Buffer</b>	50 mM Tris-HCl, 10 mM reduced Glutathione, pH=8.0 in the elution buffer.
<b>GENE INFORMATION</b>	
<b>Gene Name</b>	DUSP22 dual specificity phosphatase 22 [ Homo sapiens ]
<b>Official Symbol</b>	DUSP22
<b>Synonyms</b>	DUSP22; dual specificity phosphatase 22; dual specificity protein phosphatase 22; JKAP; JSP1; MKPX; VHX; JSP-1; MKP-x; LMW-DSP2; MAP kinase phosphatase x; JNK-stimulating phosphatase 1; JNK-stimulatory phosphatase-1; mitogen-activated protein kinase phosphatase x; low molecular weight dual specificity phosphatase 2; homolog of mouse dual specificity phosphatase LMW-DSP2; LMWDSP2; FLJ35864;
<b>Gene ID</b>	56940
<b>mRNA Refseq</b>	NM_020185
<b>Protein Refseq</b>	NP_064570
<b>MIM</b>	616778
<b>UniProt ID</b>	Q9NRW4

 Tel: 1-631-559-9269 1-516-512-3133

 Email: [info@creative-biomart.com](mailto:info@creative-biomart.com)  Fax: 1-631-938-8127

 45-1 Ramsey Road, Shirley, NY 11967, USA

**Quality Control  
Testing**



12.5% SDS-PAGE Stained with Coomassie Blue.

 Tel: 1-631-559-9269 1-516-512-3133

 Email: [info@creative-biomart.com](mailto:info@creative-biomart.com)  Fax: 1-631-938-8127

 45-1 Ramsey Road, Shirley, NY 11967, USA