

Recombinant Human DUSP26 Protein, GST-tagged

Cat. No. DUSP26-2937H Lot. No. (See product label)

SPECIFICATION

Product Overview	Human DUSP26 full-length ORF (NP_076930.1, 1 a.a. - 211 a.a.) recombinant protein with GST-tag at N-terminal.
Species	Human
Source	Wheat Germ
Description	This gene encodes a member of the tyrosine phosphatase family of proteins and exhibits dual specificity by dephosphorylating tyrosine as well as serine and threonine residues. This gene has been described as both a tumor suppressor and an oncogene depending on the cellular context. This protein may regulate neuronal proliferation and has been implicated in the progression of glioblastoma through its ability to dephosphorylate the p53 tumor suppressor. Alternative splicing results in multiple transcript variants. [provided by RefSeq, Feb 2015]
Molecular Mass	50.3 kDa
AA Sequence	MCPGNWLWASMTFMARFSRSSSRSPVRTRGTL EEMPTVQHPFLNVFELERLLYTG KTACNHADEVWPGLYLGDQDMANNRRELRLGITHVLNASHSRWRGTPEAYEGLG IRYLGVEAHDSPA FDM S I H F Q T A A D F I H R A L S Q P G G K I L V H C A V G V S R S A T L V L A Y L M LYHHLTLVEAIKKVKDHRGIIPNRGFLRQLLALDRRLRQGLEA
Applications	Enzyme-linked Immunoabsorbent Assay Western Blot (Recombinant protein) Antibody Production

 Tel: 1-631-559-9269 1-516-512-3133

 Email: info@creative-biomart.com  Fax: 1-631-938-8127

 45-1 Ramsey Road, Shirley, NY 11967, USA

Protein Array

Notes	Best use within three months from the date of receipt of this protein.
Storage	Store at -80 centigrade. Aliquot to avoid repeated freezing and thawing.
Storage Buffer	50 mM Tris-HCl, 10 mM reduced Glutathione, pH=8.0 in the elution buffer.

GENE INFORMATION

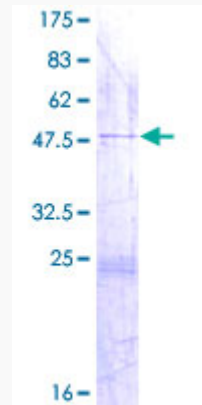
Gene Name	DUSP26 dual specificity phosphatase 26 (putative) [Homo sapiens]
Official Symbol	DUSP26
Synonyms	DUSP26; dual specificity phosphatase 26 (putative); dual specificity protein phosphatase 26; DUSP24; MGC1136; DSP-4; MKP-8; MAP kinase phosphatase 8; dual specificity phosphatase SKRP3; dual-specificity phosphatase SKRP3; mitogen-activated protein kinase phosphatase 8; Novel amplified gene in thyroid anaplastic cancer; low-molecular-mass dual-specificity phosphatase 4; MKP8; LDP-4; NATA1; SKRP3; MGC2627;
Gene ID	78986
mRNA Refseq	NM_024025
Protein Refseq	NP_076930
UniProt ID	Q9BV47

 Tel: 1-631-559-9269 1-516-512-3133

 Email: info@creative-biomart.com  Fax: 1-631-938-8127

 45-1 Ramsey Road, Shirley, NY 11967, USA

**Quality Control
Testing**



12.5% SDS-PAGE Stained with Coomassie Blue.

 Tel: 1-631-559-9269 1-516-512-3133

 Email: info@creative-biomart.com  Fax: 1-631-938-8127

 45-1 Ramsey Road, Shirley, NY 11967, USA