

## Recombinant Human DUSP6 Protein, His-tagged

Cat. No. DUSP6-384H Lot. No. (See product label)

### SPECIFICATION

**Product Overview** Recombinant Human DUSP6(Met1~Ser300) fused with His tag at N-terminal was expressed in E. coli.

**Species** Human

**Source** E.coli

**ProteinLength** Met1~Ser300

**Description** The protein encoded by this gene is a member of the dual specificity protein phosphatase subfamily. These phosphatases inactivate their target kinases by dephosphorylating both the phosphoserine/threonine and phosphotyrosine residues. They negatively regulate members of the mitogen-activated protein (MAP) kinase superfamily (MAPK/ERK, SAPK/JNK, p38), which are associated with cellular proliferation and differentiation. Different members of the family of dual specificity phosphatases show distinct substrate specificities for various MAP kinases, different tissue distribution and subcellular localization, and different modes of inducibility of their expression by extracellular stimuli. This gene product inactivates ERK2, is expressed in a variety of tissues with the highest levels in heart and pancreas, and unlike most other members of this family, is localized in the cytoplasm. Mutations in this gene have been associated with congenital hypogonadotropic hypogonadism. Alternatively spliced transcript variants have been found for this gene.

**Form** PBS, pH7.4, containing 0.01% SKL, 1mM DTT, 5% Trehalose and Proclin300.

 Tel: 1-631-559-9269 1-516-512-3133

 Email: [info@creative-biomart.com](mailto:info@creative-biomart.com)  Fax: 1-631-938-8127

 45-1 Ramsey Road, Shirley, NY 11967, USA

<b>Molecular Mass</b>	40.6kDa
<b>Endotoxin</b>	<1.0EU per 1g (determined by the LAL method)
<b>Purity</b>	> 98%
<b>Applications</b>	Positive Control; Immunogen; SDS-PAGE; WB. If bio-activity of the protein is needed, please check active protein.
<b>Stability</b>	The thermal stability is described by the loss rate. The loss rate was determined by accelerated thermal degradation test, that is, incubate the protein at 37 centigrade for 48h, and no obvious degradation and precipitation were observed. The loss rate is less than 5% within the expiration date under appropriate storage condition.
<b>Storage</b>	Avoid repeated freeze/thaw cycles. Store at 2-8 centigrade for one month. Aliquot and store at -80 centigrade for 12 months.
<b>Reconstitution</b>	Reconstitute in PBS or others.

## GENE INFORMATION

<b>Gene Name</b>	<a href="#">DUSP6 dual specificity phosphatase 6 [ Homo sapiens ]</a>
<b>Official Symbol</b>	<a href="#">DUSP6</a>
<b>Synonyms</b>	DUSP6; dual specificity phosphatase 6; dual specificity protein phosphatase 6; MKP 3; PYST1; MAP kinase phosphatase 3; dual specificity protein phosphatase PYST1; serine/threonine specific protein phosphatase; mitogen-activated protein kinase phosphatase 3; MKP3;
<b>Gene ID</b>	<a href="#">1848</a>

 Tel: 1-631-559-9269 1-516-512-3133

 Email: [info@creative-biomart.com](mailto:info@creative-biomart.com)  Fax: 1-631-938-8127

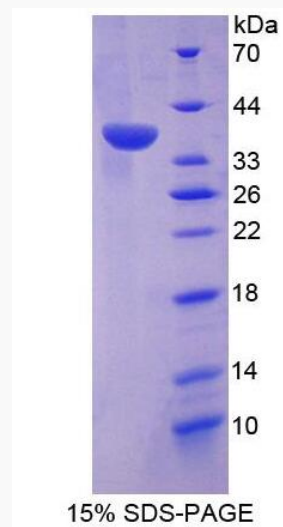
 45-1 Ramsey Road, Shirley, NY 11967, USA

mRNA Refseq [NM\\_001946](#)

Protein Refseq [NP\\_001937](#)

MIM [602748](#)

UniProt ID [Q16828](#)



Tel: 1-631-559-9269 1-516-512-3133

Email: [info@creative-biomart.com](mailto:info@creative-biomart.com) Fax: 1-631-938-8127

45-1 Ramsey Road, Shirley, NY 11967, USA