

Recombinant Human DUSP6 Protein, Myc/DDK-tagged, C13 and N15-labeled

Cat. No. DUSP6-5116H Lot. No. (See product label)

SPECIFICATION

Product Overview DUSP6 MS Standard C13 and N15-labeled recombinant protein (NP_001937) with a C-terminal MYC/DDK tag, was expressed in HEK293 cells.

Species Human

Source HEK293

Description The protein encoded by this gene is a member of the dual specificity protein phosphatase subfamily. These phosphatases inactivate their target kinases by dephosphorylating both the phosphoserine/threonine and phosphotyrosine residues. They negatively regulate members of the mitogen-activated protein (MAP) kinase superfamily (MAPK/ERK, SAPK/JNK, p38), which are associated with cellular proliferation and differentiation. Different members of the family of dual specificity phosphatases show distinct substrate specificities for various MAP kinases, different tissue distribution and subcellular localization, and different modes of inducibility of their expression by extracellular stimuli. This gene product inactivates ERK2, is expressed in a variety of tissues with the highest levels in heart and pancreas, and unlike most other members of this family, is localized in the cytoplasm. Mutations in this gene have been associated with congenital hypogonadotropic hypogonadism. Alternatively spliced transcript variants have been found for this gene.

Molecular Mass 42.3 kDa

 Tel: 1-631-559-9269 1-516-512-3133

 Email: info@creative-biomart.com  Fax: 1-631-938-8127

 45-1 Ramsey Road, Shirley, NY 11967, USA

AA Sequence	MIDTLRPVPFASMAISKTVAWLNEQLELGNERLLLMDCRPQELYESSHIESAINVAIP GIMLRRLQKGNLPVRALFTRGEDRDRFTRRCGTDTVVLYDESSSDWNENTGGESV LGLLLKCLKDEGCRAFYLEGGFSKFQAEFSLHCETNLDGSCSSSSPPLPVLGLGGLR ISSDSSSDIESDLDRDPNSATDSDGSPLSNSQPSFPVEILPFLYLGCARDSTNLDVLE EFGIKYILNVTPNLPNLFENAGEFKYKQIPISDHWSQNLSQFFPEAISFIDEARGKNCG VLVHCLAGISRSVTVTVAYLMQKLNLSMNDAYDIVKMKKSNI SPN FNFMGQLLDFER TLGLSSPCDNRVPAQQLYFTTPSNQNVYQVDSLQSTTRTRPLEQKLISEEDLAANDI LDYKDDDDKV
Purity	> 80% as determined by SDS-PAGE and Coomassie blue staining
Stability	Stable for 3 months from receipt of products under proper storage and handling conditions.
Storage	Store at -80 centigrade. Avoid repeated freeze-thaw cycles.
Concentration	50 µg/mL as determined by BCA
Storage Buffer	100 mM glycine, 25 mM Tris-HCl, pH 7.3.

GENE INFORMATION

Gene Name	DUSP6 dual specificity phosphatase 6 [Homo sapiens (human)]
Official Symbol	DUSP6
Synonyms	DUSP6; dual specificity phosphatase 6; dual specificity protein phosphatase 6; MKP 3; PYST1; MAP kinase phosphatase 3; dual specificity protein phosphatase PYST1; serine/threonine specific protein phosphatase; mitogen-activated protein kinase phosphatase 3; MKP3;

 Tel: 1-631-559-9269 1-516-512-3133

 Email: info@creative-biomart.com  Fax: 1-631-938-8127

 45-1 Ramsey Road, Shirley, NY 11967, USA

Gene ID 1848

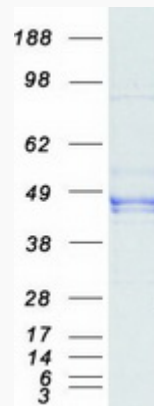
mRNA Refseq NM_001946

Protein Refseq NP_001937

MIM 602748

UniProt ID Q16828

SDS-PAGE



 Tel: 1-631-559-9269 1-516-512-3133

 Email: info@creative-biomart.com  Fax: 1-631-938-8127

 45-1 Ramsey Road, Shirley, NY 11967, USA