

Active Recombinant Human DUSP6 Protein

Cat. No. DUSP6-631H Lot. No. (See product label)

SPECIFICATION

Product Overview Recombinant full length MKP-3 without tag was produced in Sf9 insect cells.

Species Human

Source Insect Cells

Description

The protein encoded by this gene is a member of the dual specificity protein phosphatase subfamily. These phosphatases inactivate their target kinases by dephosphorylating both the phosphoserine/threonine and phosphotyrosine residues. They negatively regulate members of the mitogen-activated protein (MAP) kinase superfamily (MAPK/ERK, SAPK/JNK, p38), which are associated with cellular proliferation and differentiation. Different members of the family of dual specificity phosphatases show distinct substrate specificities for various MAP kinases, different tissue distribution and subcellular localization, and different modes of inducibility of their expression by extracellular stimuli. This gene product inactivates ERK2, is expressed in a variety of tissues with the highest levels in heart and pancreas, and unlike most other members of this family, is localized in the cytoplasm. Mutations in this gene have been associated with congenital hypogonadotropic hypogonadism. Alternatively spliced transcript variants have been found for this gene.

Form Liquid

Bio-activity

≥10 U/mg assayed by 3-O-methyl fluorescein phosphate (OMFP) hydrolysis at pH 8.2, 30 centigrade. One unit is equal to 1 nmole phosphate hydrolyzed from OMFP per minute.

 Tel: 1-631-559-9269 1-516-512-3133

 Email: info@creative-biomart.com  Fax: 1-631-938-8127

 45-1 Ramsey Road, Shirley, NY 11967, USA

Molecular Mass	42 kDa
Storage	Store at -80 centigrade.
Storage Buffer	In 20mM TRIS/HCl, pH 8.0, 200mM NaCl, 5mM DTT, 0.1 % Tween-20, 10% glycerol.
Shipping	Dry ice
Full Length	Full L.

GENE INFORMATION

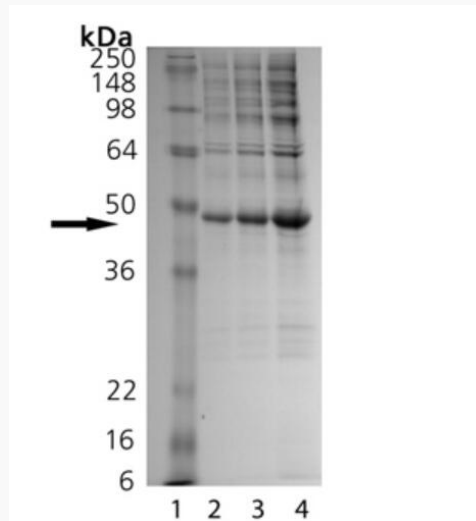
Gene Name	DUSP6 dual specificity phosphatase 6 [Homo sapiens (human)]
Official Symbol	DUSP6
Synonyms	DUSP6; dual specificity phosphatase 6; HH19; MKP3; PYST1; dual specificity protein phosphatase 6; MAP kinase phosphatase 3; dual specificity protein phosphatase PYST1; mitogen-activated protein kinase phosphatase 3; serine/threonine specific protein phosphatase; EC 3.1.3.16; EC 3.1.3.48
Gene ID	1848
mRNA Refseq	NM_001946
Protein Refseq	NP_001937
MIM	602748
UniProt ID	Q16828

 Tel: 1-631-559-9269 1-516-512-3133

 Email: info@creative-biomart.com  Fax: 1-631-938-8127

 45-1 Ramsey Road, Shirley, NY 11967, USA

SDS-PAGE Analysis.



Lane 1: MW Marker

Lane 2: 1 µg MKP-3

Lane 3: 2 µg MKP-3

Lane 4: 5 µg MKP-3

 Tel: 1-631-559-9269 1-516-512-3133

 Email: info@creative-biomart.com  Fax: 1-631-938-8127

 45-1 Ramsey Road, Shirley, NY 11967, USA