

Recombinant Canis lupus DUT protein, His-tagged

Cat. No. DUT-12C Lot. No. (See product label)

SPECIFICATION

Product Overview	Recombinant Canis lupus DUT fused with His tag was expressed in E. coli.
Species	Canis lupus
Source	E.coli
Form	20 mM Tris-HCl, 0.15 M NaCl, pH 8.0
Molecular Mass	~18.136 kDa
AA Sequence	MGHHHHHHTPAISPSKRARPAEDGMRLRFVRLSEHATAPTKGSPRAAGYDLYSAY DYILPPMEKAIVKTDIQVALPSGCYGRVAPRSGLAAKHFIDVGAGVIDEDYRGNVGVV LFNFGKEKFEVKKGDRIAQLICERIFYPEIEEVQVLDDTERGSGGFGSTGKN
Endotoxin	< 1.0 EU per µg of the protein as determined by the LAL method
Purity	>95% by SDS-PAGE

GENE INFORMATION

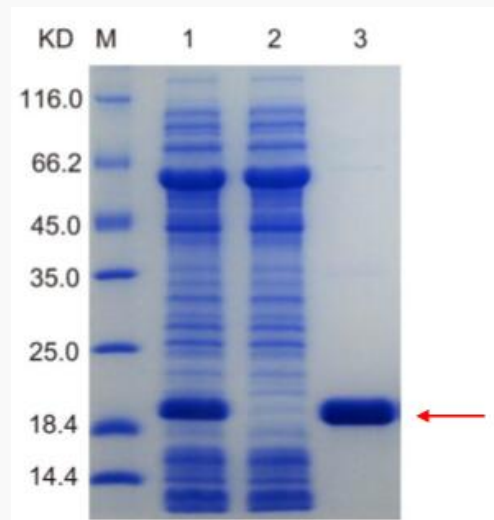
Gene Name	DUT deoxyuridine triphosphatase [Canis lupus familiaris]
Official Symbol	DUT
Synonyms	deoxyuridine 5'-triphosphate nucleotidohydrolase, mitochondrial; dUTP

 Tel: 1-631-559-9269 1-516-512-3133

 Email: info@creative-biomart.com  Fax: 1-631-938-8127

 45-1 Ramsey Road, Shirley, NY 11967, USA

	pyrophosphatase
Gene ID	609526
Chromosome Location	chromosome: 30
Pathway	Metabolic pathways, organism-specific biosystem; Pyrimidine metabolism, organism-specific biosystem; Pyrimidine metabolism, conserved biosystem



Tel: 1-631-559-9269 1-516-512-3133

Email: info@creative-biomart.com Fax: 1-631-938-8127

45-1 Ramsey Road, Shirley, NY 11967, USA