

Recombinant Human DVL1 protein, His & T7-tagged

Cat. No. DVL1-1682H Lot. No. (See product label)

SPECIFICATION

Product Overview	Recombinant Human DVL1 aa. (Arg150~Lys285 (Accession # O14640)) fused with N-terminal His & T7 tag was produced in E. coli cells.
Species	Human
Source	E.coli
ProteinLength	Arg150~Lys285
Description	DVL1, the human homolog of the Drosophila dishevelled gene (dsh) encodes a cytoplasmic phosphoprotein that regulates cell proliferation, acting as a transducer molecule for developmental processes, including segmentation and neuroblast specification. DVL1 is a candidate gene for neuroblastomatous transformation. The Schwartz-Jampel syndrome and Charcot-Marie-Tooth disease type 2A have been mapped to the same region as DVL1. The phenotypes of these diseases may be consistent with defects which might be expected from aberrant expression of a DVL gene during development.
Form	Freeze-dried powder
Molecular Mass	Predicted Molecular Mass: 19.0kDa
Endotoxin	<1.0EU per 1ug (determined by the LAL method)
Purity	>95%

 Tel: 1-631-559-9269 1-516-512-3133

 Email: info@creative-biomart.com  Fax: 1-631-938-8127

 45-1 Ramsey Road, Shirley, NY 11967, USA

Applications	SDS-PAGE; WB; ELISA; IP.
Stability	The thermal stability is described by the loss rate. The loss rate was determined by accelerated thermal degradation test, that is, incubate the protein at 37°C for 48h, and no obvious degradation and precipitation were observed. The loss rate is less than 5% within the expiration date under appropriate storage condition.
Storage	Avoid repeated freeze/thaw cycles. Store at 2-8°C for one month. Aliquot and store at -80°C for 12 months.
Storage buffer	Supplied as lyophilized form in PBS, pH7.4, containing 5% sucrose, 0.01% sarcosyl.
Reconstitution	Reconstitute in sterile PBS, pH7.2-pH7.4.
Isoelectric Point	11.1

GENE INFORMATION

Gene Name	DVL1 dishevelled segment polarity protein 1 [Homo sapiens (human)]
Official Symbol	DVL1
Synonyms	DVL1; dishevelled segment polarity protein 1; DVL; DRS2; DVL1L1; DVL1P1; segment polarity protein dishevelled homolog DVL-1; DSH homolog 1; dishevelled 1 (homologous to Drosophila dsh); dishevelled, dsh homolog 1; dishevelled-1
Gene ID	1855
mRNA Refseq	NM_001330311.1
Protein Refseq	NP_001317240.1

 Tel: 1-631-559-9269 1-516-512-3133

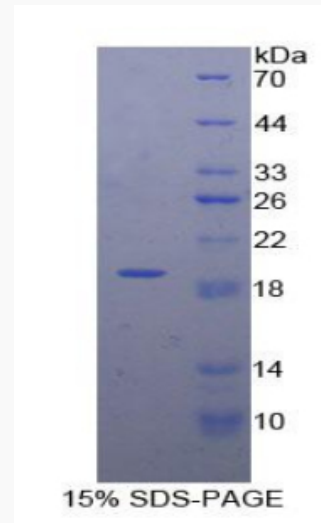
 Email: info@creative-biomart.com  Fax: 1-631-938-8127

 45-1 Ramsey Road, Shirley, NY 11967, USA

UniProt ID

O14640

SDS-PAGE



 Tel: 1-631-559-9269 1-516-512-3133

 Email: info@creative-biomart.com  Fax: 1-631-938-8127

 45-1 Ramsey Road, Shirley, NY 11967, USA