

Recombinant Human DVL1 Protein, GST-tagged

Cat. No. DVL1-2959H **Lot. No.** (See product label)

SPECIFICATION

Product Overview	Human DVL1 full-length ORF (NP_877580.1, 1 a.a. - 444 a.a.) recombinant protein with GST-tag at N-terminal.
Species	Human
Source	Wheat Germ
Description	DVL1, the human homolog of the Drosophila dishevelled gene (dsh) encodes a cytoplasmic phosphoprotein that regulates cell proliferation, acting as a transducer molecule for developmental processes, including segmentation and neuroblast specification. DVL1 is a candidate gene for neuroblastomatous transformation. The Schwartz-Jampel syndrome and Charcot-Marie-Tooth disease type 2A have been mapped to the same region as DVL1. The phenotypes of these diseases may be consistent with defects which might be expected from aberrant expression of a DVL gene during development. [provided by RefSeq, Jul 2008]
Molecular Mass	74.1 kDa
AA Sequence	MAETKIIYHMDEEETPYLVKLPVAPERVTLADFKNVLSNRPVHAYKFFFKSMDQDFG VVKEEIFDDNAKLPCFNDRVSWLVLAEGAHS DAGSQGTDSHTDLPPPLERTGGIG DSRPPSFHPNVASSRDGMDNETGTESMVSHRRERARRRNREEAARTNGHPRGDR RRDVGLPPDSASTALSSELESSSFVDSDEDGSTSRLSSSTEQSTSSRLTRKYASSLL KHGFLRHTVNKITFSEQCYYVFGDLCNSLATLNLNSGSSGTS DQDTLAPLHPAAP WPLGQGYPYQYPGPPPCFPAYQDPGFSYGSGSTGSQQSEGSKSSGSTRSSRA

 Tel: 1-631-559-9269 1-516-512-3133

 Email: info@creative-biomart.com  Fax: 1-631-938-8127

 45-1 Ramsey Road, Shirley, NY 11967, USA

PGREKERRAAGAGGSGSESDHTAPSGVGGSSWRERPAGQLSRGSSPRSQASATAP
GLPPPHTTKAYTVVGGPPGPPVRELAAVPELTGSRQSFQKAMGNPCEFFVDIM

Applications	Enzyme-linked Immunoabsorbent Assay Western Blot (Recombinant protein) Antibody Production Protein Array
Notes	Best use within three months from the date of receipt of this protein.
Storage	Store at -80 centigrade. Aliquot to avoid repeated freezing and thawing.
Storage Buffer	50 mM Tris-HCl, 10 mM reduced Glutathione, pH=8.0 in the elution buffer.

GENE INFORMATION

Gene Name	DVL1 dishevelled, dsh homolog 1 (Drosophila) [Homo sapiens]
Official Symbol	DVL1
Synonyms	DVL1; dishevelled, dsh homolog 1 (Drosophila); dishevelled 1 (homologous to Drosophila dsh); segment polarity protein dishevelled homolog DVL-1; DSH homolog 1; dishevelled-1; DVL; DVL1L1; MGC54245;
Gene ID	1855
mRNA Refseq	NM_004421
Protein Refseq	NP_004412
MIM	601365

 Tel: 1-631-559-9269 1-516-512-3133

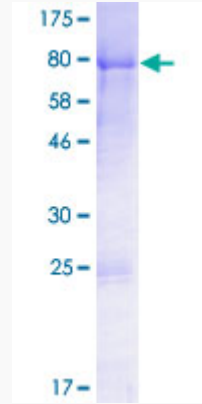
 Email: info@creative-biomart.com  Fax: 1-631-938-8127

 45-1 Ramsey Road, Shirley, NY 11967, USA


UniProt ID

O14640

Quality Control
Testing



12.5% SDS-PAGE Stained with Coomassie Blue.

 Tel: 1-631-559-9269 1-516-512-3133

 Email: info@creative-biomart.com  Fax: 1-631-938-8127

 45-1 Ramsey Road, Shirley, NY 11967, USA