

Recombinant Human DYNC1H1 Protein, GST-tagged

Cat. No. DYNC1H1-2965H **Lot. No.** (See product label)

SPECIFICATION

Product Overview	Human DNCH1 partial ORF (AAH21297, 733 a.a. - 832 a.a.) recombinant protein with GST-tag at N-terminal.
Species	Human
Source	Wheat Germ
Description	Dyneins are a group of microtubule-activated ATPases that function as molecular motors. They are divided into two subgroups of axonemal and cytoplasmic dyneins. The cytoplasmic dyneins function in intracellular motility, including retrograde axonal transport, protein sorting, organelle movement, and spindle dynamics. Molecules of conventional cytoplasmic dynein are comprised of 2 heavy chain polypeptides and a number of intermediate and light chains. This gene encodes a member of the cytoplasmic dynein heavy chain family. [provided by RefSeq, Oct 2008]
Molecular Mass	36.63 kDa
AA Sequence	TSQGATLDACSGVTGLKLQGATCNNKLSLSNAISTALPLTQLRWVKQTNTEKKAS VVTLPVYLNFTRADLIFTVD FEIATKEDPRSFYERGVAVLCTE
Applications	Enzyme-linked Immunoabsorbent Assay Western Blot (Recombinant protein) Antibody Production Protein Array

 Tel: 1-631-559-9269 1-516-512-3133

 Email: info@creative-biomart.com  Fax: 1-631-938-8127

 45-1 Ramsey Road, Shirley, NY 11967, USA

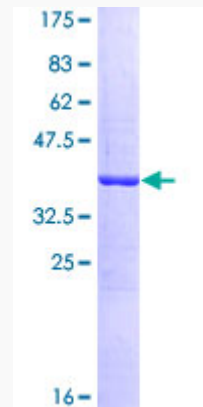
Notes	Best use within three months from the date of receipt of this protein.
Storage	Store at -80 centigrade. Aliquot to avoid repeated freezing and thawing.
Storage Buffer	50 mM Tris-HCl, 10 mM reduced Glutathione, pH=8.0 in the elution buffer.
GENE INFORMATION	
Gene Name	DYNC1H1 dynein, cytoplasmic 1, heavy chain 1 [Homo sapiens]
Official Symbol	DYNC1H1
Synonyms	DYNC1H1; dynein, cytoplasmic 1, heavy chain 1; DNCH1, DNCL, DNECL, dynein, cytoplasmic, heavy polypeptide 1; cytoplasmic dynein 1 heavy chain 1; DHC1; Dnchc1; HL 3; p22; dynein heavy chain, cytosolic; cytoplasmic dynein heavy chain 1; dynein, cytoplasmic, heavy polypeptide 1; DNCL; DYHC; HL-3; CMT20; DHC1a; DNCH1; DNECL; MRD13; KIAA0325; DKFZp686P2245;
Gene ID	1778
mRNA Refseq	NM_001376
Protein Refseq	NP_001367
MIM	600112
UniProt ID	Q14204

 Tel: 1-631-559-9269 1-516-512-3133

 Email: info@creative-biomart.com  Fax: 1-631-938-8127

 45-1 Ramsey Road, Shirley, NY 11967, USA

**Quality Control
Testing**



12.5% SDS-PAGE Stained with Coomassie Blue.

 Tel: 1-631-559-9269 1-516-512-3133

 Email: info@creative-biomart.com  Fax: 1-631-938-8127

 45-1 Ramsey Road, Shirley, NY 11967, USA