

Recombinant Human DYNC1LI1 Protein, Myc/DDK-tagged, C13 and N15-labeled

Cat. No. DYNC1LI1-2294H **Lot. No.** (See product label)

SPECIFICATION

Product Overview	DYNC1LI1 MS Standard C13 and N15-labeled recombinant protein (NP_057225) with a C-terminal MYC/DDK tag, was expressed in HEK293 cells.
Species	Human
Source	HEK293
Description	The protein encoded by this gene belongs to light intermediate subunit family, whose members are components of the multiprotein cytoplasmic dynein complex, which is involved in intracellular trafficking and chromosome segregation during mitosis. The protein plays a role in moving the spindle assembly checkpoint (SAC) from kinetochores to spindle poles. The protein may also mediate binding to other cargo molecules to facilitate intracellular vesicle trafficking.
Molecular Mass	56.6 kDa
AA Sequence	<p>MAAVGRVGSFGSSPPGLSSTYTGGPLGNEIASGNNGAAAGDDEDGQNLWSCILSE VSTRSRSKLPAGKNVLLLGEDGAGKTSIRKIQQIEEYKKGRLLEYLYLNVHDEDRD DQTRCNVWILDGDLYHKGLLKFSLDVSLKDTLVMLVVDMSKPWTALDSLQKWASV VREHVDKLIKIPPEEMKQMEQKLIRDFQEYVEPGEDFPASPQRRNTASQEDKDDSVV LPLGADTLTHNLGIPVLVCTKCDASVLEKEHDYRDEHFDIFIQSHIRKFCLQYGAALI YTSVKENKNIDLVIKYIVQKLYGFPYKIPAVVVEKDAVFIPAGWDNDKKIGILHENFQT LKAEDNFEDIITKPPVRKVFVHEKEIMAEDDQVFLMKLQSLAKQPPTAAGRVPVDASPR</p>

 Tel: 1-631-559-9269 1-516-512-3133

 Email: info@creative-biomart.com  Fax: 1-631-938-8127

 45-1 Ramsey Road, Shirley, NY 11967, USA

VPGGSPRTPNRSVSSNVASVSPIPAGSKKIDPNMKAGATSEGVLANFFNSLLSKKTG
 SPGGPGVSGGSPAGGAGGGSSGLPPSTKKSGQKPVLVDVHAELDRITRKPVTVSPT
 TPTSPTEGEASTRTRPLEQKLISEEDLAANDILDYKDDDDKV

Purity > 80% as determined by SDS-PAGE and Coomassie blue staining

Stability Stable for 3 months from receipt of products under proper storage and handling conditions.

Storage Store at -80 centigrade. Avoid repeated freeze-thaw cycles.

Concentration 50 µg/mL as determined by BCA

Storage Buffer 100 mM glycine, 25 mM Tris-HCl, pH 7.3.

GENE INFORMATION

Gene Name [DYNC1LI1 dynein cytoplasmic 1 light intermediate chain 1 \[Homo sapiens \(human\) \]](#)

Official Symbol [DYNC1LI1](#)

Synonyms DYNC1LI1; dynein, cytoplasmic 1, light intermediate chain 1; DNCLI1, dynein, cytoplasmic, light intermediate polypeptide 1; cytoplasmic dynein 1 light intermediate chain 1; DLC-A; dynein light chain A; dynein light chain-A; dynein light intermediate chain 1, cytosolic; dynein, cytoplasmic, light intermediate polypeptide 1; LIC1; DNCLI1; FLJ10219;

Gene ID [51143](#)

mRNA Refseq [NM_016141](#)

 Tel: 1-631-559-9269 1-516-512-3133

 Email: info@creative-biomart.com  Fax: 1-631-938-8127

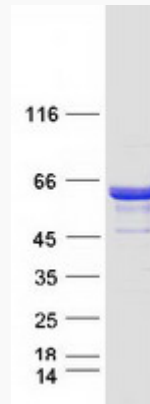
 45-1 Ramsey Road, Shirley, NY 11967, USA

Protein Refseq NP_057225

MIM 615890

UniProt ID Q9Y6G9

SDS-PAGE



 Tel: 1-631-559-9269 1-516-512-3133

 Email: info@creative-biomart.com  Fax: 1-631-938-8127

 45-1 Ramsey Road, Shirley, NY 11967, USA