

Recombinant Human DYNC1LI2 Protein, GST-tagged

Cat. No. DYNC1LI2-2970H Lot. No. (See product label)

SPECIFICATION

Product Overview	Human DYNC1LI2 full-length ORF (AAH25959.1, 1 a.a. - 492 a.a.) recombinant protein with GST-tag at N-terminal.
Species	Human
Source	Wheat Germ
Description	Cytoplasmic dynein is a microtubule-associated motor protein (Hughes et al., 1995 [PubMed 7738094]). See DYNC1H1 (MIM 600112) for general information about dyneins.[supplied by OMIM, Mar 2008]
Molecular Mass	80.5 kDa
AA Sequence	<p>MAPVGVEKLLLLGPNPVAVAAAGDLTSEEEEGQSLWSSILSEVSTRARSKLPSGKNI LVFGEDGSGKTTLMTKLQGAEHGKKGRGLELYLSVHDEDRDDHTRCNVWILDGD LYHKGLLKFAVSAESLPETLVIFVADMSRPWTVMESLQKWASVLRHIDKMKIPPEK MRELERKFVKDFQDYMEPEEGCQGSPQRRGPLTSGSDEENVALPLGDNVLTHNLG IPVLVVCTKCDAVSVLEKEHDYRDEHLDFIQSHLRRFCLQYGAALIYTSVKEEKNLDL LYKYIVHKTYGFHFTTPALVVEKDAVFIPAGWDNEKKIILHENFTTVKPEDAYEDFIV KPPVRKLVHDKELAAEDEQVFLMKQQSLLAKQPATPTRASESPARGPSGSPRTQG RGGPASVPSSSPGTSVKKPDPNIKNNAAASEGLASFFNSLLSKKTGSPGSPGAGGV QSTAKNSGQKTVLSNVQEELDRMTRKPDSMVTNSSTENEA</p>
Applications	Enzyme-linked Immunoabsorbent Assay Western Blot (Recombinant protein)

 Tel: 1-631-559-9269 1-516-512-3133

 Email: info@creative-biomart.com  Fax: 1-631-938-8127

 45-1 Ramsey Road, Shirley, NY 11967, USA

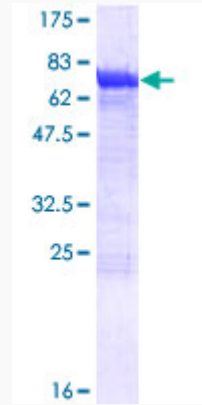
	Antibody Production Protein Array
Notes	Best use within three months from the date of receipt of this protein.
Storage	Store at -80 centigrade. Aliquot to avoid repeated freezing and thawing.
Storage Buffer	50 mM Tris-HCl, 10 mM reduced Glutathione, pH=8.0 in the elution buffer.
GENE INFORMATION	
Gene Name	DYNC1LI2 dynein cytoplasmic 1 light intermediate chain 2 [Homo sapiens (human)]
Official Symbol	DYNC1LI2
Synonyms	DYNC1LI2; dynein cytoplasmic 1 light intermediate chain 2; Dynein Cytoplasmic 1 Light Intermediate Chain 2; Dynein, Cytoplasmic, Light Intermediate Polypeptide 2; Dynein Light Intermediate Chain 2, Cytosolic; LIC53/55; DNCLI2; LIC-2; LIC2; Cytoplasmic Dynein 1 Light Intermediate Chain 2; cytoplasmic dynein 1 light intermediate chain 2; dynein light intermediate chain 2, cytosolic; dynein, cytoplasmic, light intermediate polypeptide 2
Gene ID	1783
mRNA Refseq	NM_001286157
Protein Refseq	NP_001273086
MIM	611406
UniProt ID	O43237

 Tel: 1-631-559-9269 1-516-512-3133

 Email: info@creative-biomart.com  Fax: 1-631-938-8127

 45-1 Ramsey Road, Shirley, NY 11967, USA

**Quality Control
Testing**



12.5% SDS-PAGE Stained with Coomassie Blue.

 Tel: 1-631-559-9269 1-516-512-3133

 Email: info@creative-biomart.com  Fax: 1-631-938-8127

 45-1 Ramsey Road, Shirley, NY 11967, USA