

## Recombinant Human DYNC2LI1 Protein, GST-tagged

Cat. No. DYNC2LI1-2971H Lot. No. (See product label)

### SPECIFICATION

<b>Product Overview</b>	Human DYNC2LI1 full-length ORF ( NP_056337.1, 1 a.a. - 201 a.a.) recombinant protein with GST-tag at N-terminal.
<b>Species</b>	Human
<b>Source</b>	Wheat Germ
<b>Description</b>	This gene encodes a protein that is a component of the dynein-2 microtubule motor protein complex that plays a role in the retrograde transport of cargo in primary cilia via the intraflagellar transport system. This gene is ubiquitously expressed and its protein, which localizes to the axoneme and Golgi apparatus, interacts directly with the cytoplasmic dynein 2 heavy chain 1 protein to form part of the multi-protein dynein-2 complex. Mutations in this gene produce defects in the dynein-2 complex which result in several types of ciliopathy including short-rib thoracic dysplasia 15 with polydactyly (SRTD15). Alternative splicing results in multiple transcript variants encoding distinct isoforms. [provided by RefSeq, Feb 2017]
<b>Molecular Mass</b>	48.8 kDa
<b>AA Sequence</b>	MPSETLWEIAKAEVEKRGINGSEGDGAEIAEKVFFFIGSKNGGKTTIILRCLDRDEPP KPTLALEYTYGRRAKGHNTPKDIAHFWELEGGTSLLDLISIPITGDTLRTFSLVLVLDL SKPNDLWPTMENLLQATKSHVDKVIKLGKTNKAVSEMRQKIWNNMPKDHPVSC CLGLLLESVLPFIVNDNITNNFFRFLCMT
<b>Applications</b>	Enzyme-linked Immunoabsorbent Assay

 Tel: 1-631-559-9269 1-516-512-3133

 Email: [info@creative-biomart.com](mailto:info@creative-biomart.com)  Fax: 1-631-938-8127

 45-1 Ramsey Road, Shirley, NY 11967, USA

	Western Blot (Recombinant protein) Antibody Production Protein Array
<b>Notes</b>	Best use within three months from the date of receipt of this protein.
<b>Storage</b>	Store at -80 centigrade. Aliquot to avoid repeated freezing and thawing.
<b>Storage Buffer</b>	50 mM Tris-HCl, 10 mM reduced Glutathione, pH=8.0 in the elution buffer.
<b>GENE INFORMATION</b>	
<b>Gene Name</b>	DYNC2LI1 dynein cytoplasmic 2 light intermediate chain 1 [ Homo sapiens (human) ]
<b>Official Symbol</b>	DYNC2LI1
<b>Synonyms</b>	DYNC2LI1; dynein cytoplasmic 2 light intermediate chain 1; Dynein Cytoplasmic 2 Light Intermediate Chain 1; D2LIC; LIC3; Cytoplasmic Dynein 2 Light Intermediate Chain 1; Dynein 2 Light Intermediate Chain; CGI-60; cytoplasmic dynein 2 light intermediate chain 1
<b>Gene ID</b>	51626
<b>mRNA Refseq</b>	NM_001193464
<b>Protein Refseq</b>	NP_001180393
<b>MIM</b>	617083
<b>UniProt ID</b>	Q8TCX1

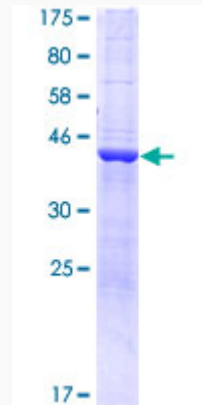
 Tel: 1-631-559-9269 1-516-512-3133

 Email: [info@creative-biomart.com](mailto:info@creative-biomart.com)  Fax: 1-631-938-8127

 45-1 Ramsey Road, Shirley, NY 11967, USA



**Quality Control  
Testing**



12.5% SDS-PAGE Stained with Coomassie Blue.

Tel: 1-631-559-9269 1-516-512-3133

Email: [info@creative-biomart.com](mailto:info@creative-biomart.com) Fax: 1-631-938-8127

45-1 Ramsey Road, Shirley, NY 11967, USA