

## Recombinant Human DYNLL1 protein, GST-tagged

Cat. No. DYNLL1-5160H Lot. No. (See product label)

### SPECIFICATION

<b>Product Overview</b>	Recombinant Human DYNLL1 protein(P63167)(1-89aa), fused to N-terminal GST tag, was expressed in E. coli.
<b>Species</b>	Human
<b>Source</b>	E.coli
<b>ProteinLength</b>	1-89aa
<b>Form</b>	If the delivery form is liquid, the default storage buffer is Tris/PBS-based buffer, 5%-50% glycerol. If the delivery form is lyophilized powder, the buffer before lyophilization is Tris/PBS-based buffer, 6% Trehalose, pH 8.0.
<b>Molecular Mass</b>	37.4 kDa
<b>Purity</b>	Greater than 90% as determined by SDS-PAGE.
<b>Storage</b>	Store at -20°C/-80°C upon receipt, aliquoting is necessary for multiple use. Avoid repeated freeze-thaw cycles.
<b>Reconstitution</b>	Please reconstitute protein in deionized sterile water to a concentration of 0.1-1.0 mg/mL. We recommend to add 5-50% of glycerol (final concentration) and aliquot for long-term storage at -20°C/-80°C. Our default final concentration of glycerol is 50%.

 Tel: 1-631-559-9269 1-516-512-3133

 Email: [info@creative-biomart.com](mailto:info@creative-biomart.com)  Fax: 1-631-938-8127

 45-1 Ramsey Road, Shirley, NY 11967, USA

## GENE INFORMATION

<b>Gene Name</b>	DYNLL1 dynein, light chain, LC8-type 1 [ Homo sapiens ]
<b>Official Symbol</b>	DYNLL1
<b>Synonyms</b>	DYNLL1; dynein, light chain, LC8-type 1; DNCL1, dynein, cytoplasmic, light polypeptide 1; dynein light chain 1, cytoplasmic; DLC1; DLC8; hdlc1; LC8; PIN; 8 kDa dynein light chain; cytoplasmic dynein light polypeptide; dynein, cytoplasmic, light polypeptide 1; protein inhibitor of neuronal nitric oxide synthase; LC8a; DNCL1; DNCLC1; MGC126137; MGC126138;
<b>Gene ID</b>	8655
<b>mRNA Refseq</b>	NM_001037494
<b>Protein Refseq</b>	NP_001032583
<b>MIM</b>	601562
<b>UniProt ID</b>	P63167

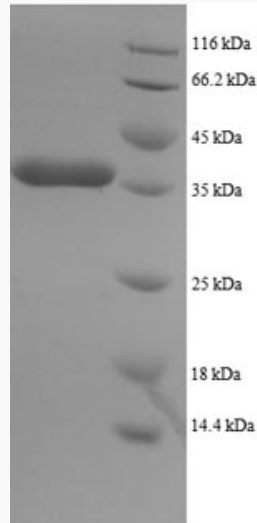
 Tel: 1-631-559-9269 1-516-512-3133

 Email: [info@creative-biomart.com](mailto:info@creative-biomart.com)  Fax: 1-631-938-8127

 45-1 Ramsey Road, Shirley, NY 11967, USA



SDS-PAGE



Tel: 1-631-559-9269 1-516-512-3133

Email: [info@creative-biomart.com](mailto:info@creative-biomart.com) Fax: 1-631-938-8127

45-1 Ramsey Road, Shirley, NY 11967, USA