

# Recombinant Human DYNLRB1 Protein, Myc/DDK-tagged, C13 and N15-labeled

**Cat. No.** DYNLRB1-1114H    **Lot. No.** (See product label)

## SPECIFICATION

<b>Product Overview</b>	DYNLRB1 MS Standard C13 and N15-labeled recombinant protein (NP_054902) with a C-terminal MYC/DDK tag, was expressed in HEK293 cells.
<b>Species</b>	Human
<b>Source</b>	HEK293
<b>Description</b>	This gene is a member of the roadblock dynein light chain family. The encoded cytoplasmic protein is capable of binding intermediate chain proteins, interacts with transforming growth factor-beta, and has been implicated in the regulation of actin modulating proteins. Upregulation of this gene has been associated with hepatocellular carcinomas, suggesting that this gene may be involved in tumor progression. Alternative splicing results in multiple transcript variants. Pseudogenes of this gene have been defined on chromosomes 12 and 18.
<b>Molecular Mass</b>	10.9 kDa
<b>AA Sequence</b>	MAEVEETLKRLQSQKGVQGIIVNTEGIPIKSTMDNPTTTQYASLMHSFILKARSTVR DIDPQNDLTFLRIRSKKNEIMVAPDKDYFLIVIQNPTETRTRPLEQKLISEEDLAANDIL DYKDDDDKV
<b>Purity</b>	> 80% as determined by SDS-PAGE and Coomassie blue staining
<b>Stability</b>	Stable for 3 months from receipt of products under proper storage and handling

 Tel: 1-631-559-9269    1-516-512-3133

 Email: [info@creative-biomart.com](mailto:info@creative-biomart.com)     Fax: 1-631-938-8127

 45-1 Ramsey Road, Shirley, NY 11967, USA

conditions.

**Storage** Store at -80 centigrade. Avoid repeated freeze-thaw cycles.

**Concentration** 50 µg/mL as determined by BCA

**Storage Buffer** 100 mM glycine, 25 mM Tris-HCl, pH 7.3.

## GENE INFORMATION

**Gene Name** [DYNLRB1 dynein light chain roadblock-type 1 \[ Homo sapiens \(human\) \]](#)

**Official Symbol** [DYNLRB1](#)

**Synonyms**

DYNLRB1; dynein, light chain, roadblock-type 1; DNCL2A, dynein, cytoplasmic, light polypeptide 2A; dynein light chain roadblock-type 1; DNLC2A; roadblock domain containing 1; ROBLD1; Roadblock-1; ROBL/LC7-like 1; bithoraxoid-like protein; dynein-associated protein Km23; dynein-associated protein HKM23; cytoplasmic dynein light chain 2A; dynein light chain 2A, cytoplasmic; roadblock domain-containing protein 1; dynein, cytoplasmic, light polypeptide 2A; BLP; BITH; DNCL2A;

**Gene ID** [83658](#)

**mRNA Refseq** [NM\\_014183](#)

**Protein Refseq** [NP\\_054902](#)

**MIM** [607167](#)

**UniProt ID** [Q9NP97](#)

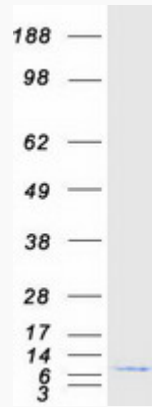
 Tel: 1-631-559-9269 1-516-512-3133

 Email: [info@creative-biomart.com](mailto:info@creative-biomart.com)  Fax: 1-631-938-8127

 45-1 Ramsey Road, Shirley, NY 11967, USA



SDS-PAGE



Tel: 1-631-559-9269 1-516-512-3133

Email: [info@creative-biomart.com](mailto:info@creative-biomart.com) Fax: 1-631-938-8127

45-1 Ramsey Road, Shirley, NY 11967, USA