

Recombinant Human DYNLRB1 protein, GST-tagged

Cat. No. DYNLRB1-12233H Lot. No. (See product label)

SPECIFICATION

Product Overview	Recombinant Human DYNLRB1 protein(1-96 aa), fused with N-terminal GST tag, was expressed in E.coli.
Species	Human
Source	E.coli
ProteinLength	1-96 aa
Form	The purified protein was lyophilized from sterile phosphate-buffered saline (PBS: 58 mM Na ₂ HPO ₄ , 17 mM NaH ₂ PO ₄ , 68 mM NaCl, pH 8.0). Prior to lyophilization, 5% (w/v) trehalose and 5% (w/v) mannitol were incorporated as cryoprotective excipients. The protein was eluted with a buffer containing 100 mM reduced glutathione (GSH).
AASequence	MAEVEETLKRLQSQKGVQGIIVVNTEGIPIKSTMDNPTTTQYASLMHSFILKARSTVR DIDPQNDLTFLRIRSKKNEIMVAPDKDYFLIVIQNPTE
Purity	90%, by SDS-PAGE with Coomassie Brilliant Blue staining.
Storage	Store at 2-8°C for 1-2 weeks. Aliquot and store at -20°C to -80°C for up to 3 months, reconstitution with sterile water and addition of an equal volume of glycerol. Avoid repeat freeze-thaw cycles.
Reconstitution	Dissolve the product in 200

 Tel: 1-631-559-9269 1-516-512-3133

 Email: info@creative-biomart.com  Fax: 1-631-938-8127

 45-1 Ramsey Road, Shirley, NY 11967, USA

µl sterile water to achieve a working concentration of 0.25 g/µl. If experimental compatibility allows, mix the aqueous solution with an equal volume of glycerol (1:1 ratio) after initial reconstitution.

GENE INFORMATION

Gene Name [DYNLRB1 dynein, light chain, roadblock-type 1 \[Homo sapiens \]](#)

Official Symbol [DYNLRB1](#)

Synonyms

DYNLRB1; dynein, light chain, roadblock-type 1; DNCL2A, dynein, cytoplasmic, light polypeptide 2A; dynein light chain roadblock-type 1; DNLC2A; roadblock domain containing 1; ROBLD1; Roadblock-1; ROBL/LC7-like 1; bithoraxoid-like protein; dynein-associated protein Km23; dynein-associated protein HKM23; cytoplasmic dynein light chain 2A; dynein light chain 2A, cytoplasmic; roadblock domain-containing protein 1; dynein, cytoplasmic, light polypeptide 2A; BLP; BITH; DNCL2A;

Gene ID [83658](#)

mRNA Refseq [NM_014183](#)

Protein Refseq [NP_054902](#)

MIM [607167](#)

UniProt ID [Q9NP97](#)

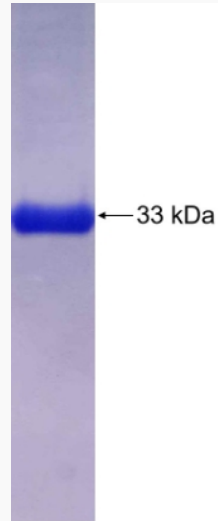
 Tel: 1-631-559-9269 1-516-512-3133

 Email: info@creative-biomart.com  Fax: 1-631-938-8127

 45-1 Ramsey Road, Shirley, NY 11967, USA



SDS-PAGE



Tel: 1-631-559-9269 1-516-512-3133

Email: info@creative-biomart.com Fax: 1-631-938-8127

45-1 Ramsey Road, Shirley, NY 11967, USA