

Recombinant Human DYNLRB1, His-tagged

Cat. No. DYNLRB1-2750H **Lot. No.** (See product label)

SPECIFICATION

Product Overview	Recombinant human DYNLRB1 human, fused to His-tag at C-terminus, was expressed in <i>E.coli</i> and purified by using conventional chromatography techniques. MW =11.9 kDa (104aa) confirmed by MALDI-TOF.
Species	Human
Source	E.coli
Description	Dynein light chain roadblock-type, also known as DYNLRB1 is a member of the roadblock dynein light chain family and encodes a cytoplasmic protein that is capable of binding intermediate chain proteins. Upregulation of this gene has been associated with hepatocellular carcinomas, suggesting that this gene may be involved in tumor progression.
Sequences Of Amino Acids	MAEVEETLKR LQSQKGVQGI IVVNTGPII KSTMDNPTTT QYASLMHSFI LKARSTVRDI DPQNDLTFLR IRSKKNEIMV APDKDYFLIV IQNPTELEHH HHHH
Purity	> 95% by SDS – PAGE.
Form	Liquid. In 20mM Tris-HCl buffer (pH 8.0) containing, 10% glycerol.
Concentration	1 mg/ml (determined by Bradford assay).
Storage	Can be stored at +4°C short term (1-2 weeks). For long term storage, aliquot and store at -20°C or -70°C. Avoid repeated freezing and thawing cycles.

 Tel: 1-631-559-9269 1-516-512-3133

 Email: info@creative-biomart.com  Fax: 1-631-938-8127

 45-1 Ramsey Road, Shirley, NY 11967, USA

GENE INFORMATION

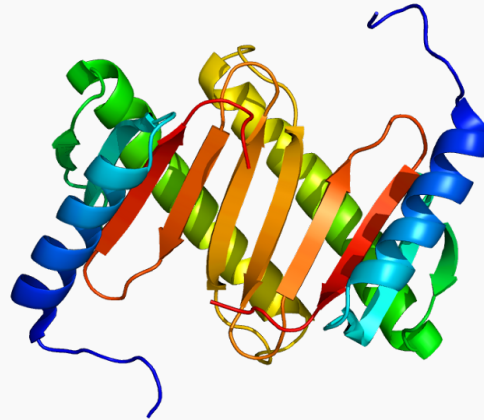
Gene Name	DYNLRB1 dynein, light chain, roadblock-type 1 [Homo sapiens]
Synonyms	DYNLRB1; dynein, light chain, roadblock-type 1; BLP; BITH; DNCL2A; DNLC2A; ROBLD1; dynein light chain roadblock-type 1; Roadblock-1; ROBL/LC7-like 1; bithoraxoid-like protein; roadblock domain containing 1; dynein-associated protein Km23; dynein-associated protein HKM23; cytoplasmic dynein light chain 2A; dynein light chain 2A, cytoplasmic; roadblock domain-containing protein 1; dynein, cytoplasmic, light polypeptide 2A
Gene ID	83658
mRNA Refseq	NM_014183
Protein Refseq	NP_054902
MIM	607167
UniProt ID	Q9NP97
Chromosome Location	20q11.21
Function	microtubule motor activity; protein binding

 Tel: 1-631-559-9269 1-516-512-3133

 Email: info@creative-biomart.com  Fax: 1-631-938-8127

 45-1 Ramsey Road, Shirley, NY 11967, USA

PDB rendering based
on 1y4o.



 Tel: 1-631-559-9269 1-516-512-3133

 Email: info@creative-biomart.com  Fax: 1-631-938-8127

 45-1 Ramsey Road, Shirley, NY 11967, USA