

# Recombinant Full Length Human DYRK1A Protein, C-DDK-tagged

**Cat. No.** DYRK1A-1346HFL    **Lot. No.** (See product label)

## SPECIFICATION

### Product Overview

Recombinant Full Length Human DYRK1A Protein, fused to DDK-tag at C-terminus, was expressed in Sf9.

### Species

Human

### Source

Mammalian Cells

### Description

This gene encodes a member of the Dual-specificity tyrosine phosphorylation-regulated kinase (DYRK) family. This member contains a nuclear targeting signal sequence, a protein kinase domain, a leucine zipper motif, and a highly conservative 13-consecutive-histidine repeat. It catalyzes its autophosphorylation on serine/threonine and tyrosine residues. It may play a significant role in a signaling pathway regulating cell proliferation and may be involved in brain development. This gene is a homolog of *Drosophila mnb* (minibrain) gene and rat *Dyrk* gene. It is localized in the Down syndrome critical region of chromosome 21, and is considered to be a strong candidate gene for learning defects associated with Down syndrome. Alternative splicing of this gene generates several transcript variants differing from each other either in the 5' UTR or in the 3' coding region. These variants encode at least five different isoforms.

### Form

50mM Tris-HCl, pH8.0, 100mM glycine, 10% glycerol.

### Molecular Mass

85.6 kDa

 Tel: 1-631-559-9269    1-516-512-3133

 Email: [info@creative-biomart.com](mailto:info@creative-biomart.com)     Fax: 1-631-938-8127

 45-1 Ramsey Road, Shirley, NY 11967, USA

<b>AA Sequence</b>	A DNA sequence from TrueORF clone, RC212584, encoding human full-length DYRK1A.
<b>Purity</b>	> 80% as determined by SDS-PAGE and Coomassie blue staining.
<b>Stability</b>	Stable for 12 months from the date of receipt of the product under proper storage and handling conditions. Avoid repeated freeze-thaw cycles.
<b>Storage</b>	Store at -80 centigrade.
<b>Concentration</b>	>50 ug/mL as determined by microplate BCA method.
<b>Preparation</b>	Recombinant protein was captured through anti-DDK affinity column followed by conventional chromatography steps.
<b>Protein Families</b>	Druggable Genome, Protein Kinase
<b>Full Length</b>	Full L.

## GENE INFORMATION

<b>Gene Name</b>	DYRK1A dual specificity tyrosine phosphorylation regulated kinase 1A [ Homo sapiens (human) ]
<b>Official Symbol</b>	DYRK1A
<b>Synonyms</b>	MNB; DYRK; HP86; MNBH; MRD7; DYRK1
<b>Gene ID</b>	1859
<b>mRNA Refseq</b>	NM_001396.5

 Tel: 1-631-559-9269 1-516-512-3133

 Email: [info@creative-biomart.com](mailto:info@creative-biomart.com)  Fax: 1-631-938-8127

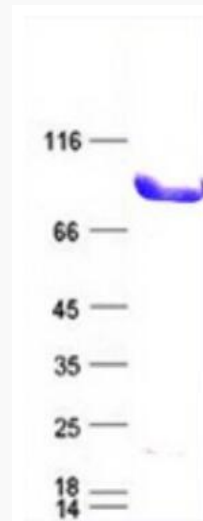
 45-1 Ramsey Road, Shirley, NY 11967, USA

**Protein Refseq** NP\_001387.2

**MIM** 600855

**UniProt ID** Q13627

**SDS-PAGE**



 Tel: 1-631-559-9269 1-516-512-3133

 Email: [info@creative-biomart.com](mailto:info@creative-biomart.com)  Fax: 1-631-938-8127

 45-1 Ramsey Road, Shirley, NY 11967, USA