

## Recombinant Human DZIP1L Protein, GST-tagged

Cat. No. DZIP1L-3000H Lot. No. (See product label)

### SPECIFICATION

<b>Product Overview</b>	Human DZIP1L full-length ORF ( NP_775814.1, 1 a.a. - 767 a.a.) recombinant protein with GST-tag at N-terminal.
<b>Species</b>	Human
<b>Source</b>	Wheat Germ
<b>Description</b>	DZIP1L (DAZ Interacting Zinc Finger Protein 1 Like) is a Protein Coding gene. An important paralog of this gene is DZIP1.
<b>Molecular Mass</b>	113.2 kDa
<b>AA Sequence</b>	<p>MQSPAATAEGLSGPLFGAYTFPTFKFQPRHDSMDWRRISTLDVDRVARELDVATLQ  ENIAGITFCNLDREVCSRQGPVDPALLKVLRLAQLIIEYLLHCQDCLSASVAQLEARL  QTSLGQQQRGQQELGRQADELKGVREESRRRRKMISTLQQLMQTGTHSYHTCHL  CDKTFMNATFLRGHIQRRHAGVAEGGKQKKQEQPVVEEVLLELRACLKWTQGELEA  QREAERQRQLQEAELIHQREIEAKKEFDKWKEQEWTKLYGEIDKLLKLFWDEFKNV  AKQNSTLEEKLRALQSHSVMESKLGSLRDEESEEWLRQARELQALREKTEIQKTEW  KRKVKELHEEHMAEKKEQENQRLQASLSQDQKAAAQSQCQISTLRAQLQEQA  RIIASQEEMIQSLSLRKVEGIHKVPAVDTEEDSPEEEMEDSQDEQHKVLAALRRNP  TLLKHFRPILEDTLEEKLESMGIRKDAKGISIQTLRHLESLLRVQREQKARKFSEFLSL  RGKLVKEVTSRAKERQENGA AVSQPDGQPSVKSQQSALVTREAQPKTRTLQVALP  STPAEPPPTRQSHGSHGSSLTQV/SAPAPHPGLHGSPSTPPSSGPGMSTPPFSSE  EDSEGDRVQRVSLQPPKVPSRMVPRPKDDWDWSDTETSEENAQPPGQGSGLVQ</p>

 Tel: 1-631-559-9269 1-516-512-3133

 Email: [info@creative-biomart.com](mailto:info@creative-biomart.com)  Fax: 1-631-938-8127

 45-1 Ramsey Road, Shirley, NY 11967, USA

SMVKNLEKQLEAPAKKPAGGVSLFFMPNAGPQRAATPGRKPKQLSEDESLEISSLE  
DLPLDLQREKPKPLSRSKLPEKFGTGPQSSGQPRVPAW

<b>Applications</b>	Enzyme-linked Immunoabsorbent Assay Western Blot (Recombinant protein) Antibody Production Protein Array
<b>Notes</b>	Best use within three months from the date of receipt of this protein.
<b>Storage</b>	Store at -80 centigrade. Aliquot to avoid repeated freezing and thawing.
<b>Storage Buffer</b>	50 mM Tris-HCl, 10 mM reduced Glutathione, pH=8.0 in the elution buffer.

## GENE INFORMATION

<b>Gene Name</b>	DZIP1L DAZ interacting zinc finger protein 1 like [ Homo sapiens (human) ]
<b>Official Symbol</b>	DZIP1L
<b>Synonyms</b>	DZIP1L; DAZ interacting zinc finger protein 1 like; DAZ Interacting Zinc Finger Protein 1 Like; DAZ-Interacting Protein 1-Like Protein; DAZ Interacting Protein 1-Like; DAZ Interacting Zinc Finger Protein 1-Like; Zinc Finger Protein DZIP1L; DZIP2; zinc finger protein DZIP1L; DAZ interacting protein 1-like; DAZ-interacting protein 1-like protein
<b>Gene ID</b>	199221
<b>mRNA Refseq</b>	NM_001170538
<b>Protein Refseq</b>	NP_001164009

 Tel: 1-631-559-9269 1-516-512-3133

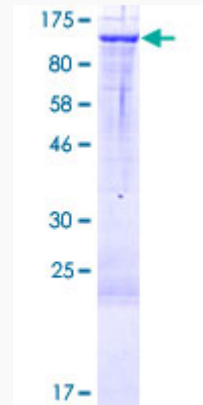
 Email: [info@creative-biomart.com](mailto:info@creative-biomart.com)  Fax: 1-631-938-8127

 45-1 Ramsey Road, Shirley, NY 11967, USA

**MIM** 617570

**UniProt ID** Q8IYY4

**Quality Control  
Testing**



12.5% SDS-PAGE Stained with Coomassie Blue.

 Tel: 1-631-559-9269 1-516-512-3133

 Email: [info@creative-biomart.com](mailto:info@creative-biomart.com)  Fax: 1-631-938-8127

 45-1 Ramsey Road, Shirley, NY 11967, USA