

Recombinant *B. burgdorferi* DbpB Protein, MBP-tagged

Cat. No. DbpB-04B Lot. No. (See product label)

SPECIFICATION

Product Overview	Recombinant <i>Borrelia burgdorferi</i> DbpB protein produced in <i>E. coli</i> . Protein contains a MBP-tag and is visible on SDS-PAGE at 60.3 kDa for DbpB-MBP (17.9 kDa for DbpB and 42.4 kDa for MBP)
Species	<i>Borrelia burgdorferi</i> B31
Source	<i>E. coli</i>
Description	Decorin Binding Protein B (DbpB) is encoded by the spirochete <i>B. burgdorferi</i> , which is carried by Ixodes ticks. Strain B31 is the type strain (ATCC 35210) for this organism and was derived by limited dilutional cloning from the original Lyme-disease tick isolate obtained by A. Barbour. It should be noted that other microbial DbpA's, such as <i>E. coli</i> (ATP-dependent RNA helicase DbpA), are significantly different to <i>Borrelia</i> DbpA. <i>B. burgdorferi sensu stricto</i> has a linear plasmid (lp54) which carries a two-gene operon encoding two surface lipoproteins, DbpA and DbpB, both of which bind decorin.
Form	Liquid, 0.2 µm filter sterilised.
Molecular Mass	60.3 kDa for DbpB-MBP (17.9 kDa for DbpB and 42.4 kDa for MBP)
Purity	> 90%
Storage	At -20 centigrade or below. Can be frozen, but avoid multiple freeze/thaw cycles

 Tel: 1-631-559-9269 1-516-512-3133

 Email: info@creative-biomart.com  Fax: 1-631-938-8127

 45-1 Ramsey Road, Shirley, NY 11967, USA

Concentration 1.0 mg/mL

Storage Buffer 0.02 M Potassium Phosphate, 0.15 M Sodium Chloride, pH 7.2 and 0.01% (w/v) Sodium Azide.

GENE INFORMATION

Gene Name [dbpB decorin-binding protein DbpB \[Borreliella burgdorferi B31 \]](#)

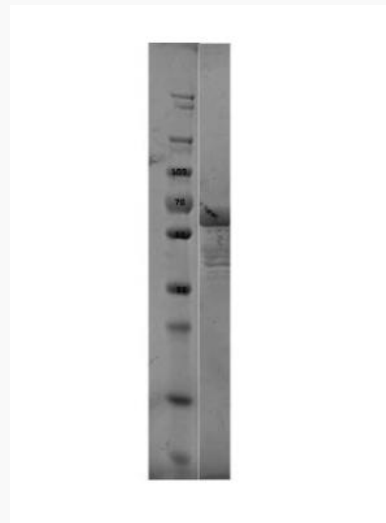
Official Symbol [dbpB](#)

Synonyms dbpB; decorin-binding protein DbpB

Gene ID [1194341](#)

Protein Refseq [WP_010890381](#)

SDS-PAGE of DbpB Protein.



Lane 1: Molecular Weight Marker.

 Tel: 1-631-559-9269 1-516-512-3133

 Email: info@creative-biomart.com  Fax: 1-631-938-8127

 45-1 Ramsey Road, Shirley, NY 11967, USA



Lane 2: DbpB Protein.

Load: 10 μ L at 1:2 dilution.

Predicted/Observed size: 60.3 kDa for DbpB-MBP (17.9 kDa for DbpB and 42.4 kDa for MBP).

 Tel: 1-631-559-9269 1-516-512-3133

 Email: info@creative-biomart.com  Fax: 1-631-938-8127

 45-1 Ramsey Road, Shirley, NY 11967, USA