

Recombinant Mouse Dcx Protein, His-tagged

Cat. No. Dcx-681M Lot. No. (See product label)

SPECIFICATION

Product Overview Recombinant Mouse Dcx(Met1~Met366) fused with His tag at N-terminal was expressed in E. coli.

Species Mouse

Source E.coli

ProteinLength Met1~Met366

Description

This gene encodes a member of the doublecortin family. The protein encoded by this gene is a cytoplasmic protein and contains two doublecortin domains, which bind microtubules. In the developing cortex, cortical neurons must migrate over long distances to reach the site of their final differentiation. The encoded protein appears to direct neuronal migration by regulating the organization and stability of microtubules. In addition, the encoded protein interacts with LIS1, the regulatory gamma subunit of platelet activating factor acetylhydrolase. Studies in knockout mice lacking this gene and the LIS1 gene suggest that the molecular interaction of these two genes is important in both in neuronal migration and neurogenesis, and there is a cortical role of this gene in nuclear translocation and positioning of the mitotic spindle in radial glial mitotic division. Multiple transcript variants encoding three different isoforms have been found for this gene.

Form PBS, pH7.4, containing 0.01% SKL, 1mM DTT, 5% Trehalose and Proclin300.

Molecular Mass 44.3kDa

 Tel: 1-631-559-9269 1-516-512-3133

 Email: info@creative-biomart.com  Fax: 1-631-938-8127

 45-1 Ramsey Road, Shirley, NY 11967, USA

Endotoxin	<1.0EU per 1ug (determined by the LAL method)
Purity	> 90%
Applications	Positive Control; Immunogen; SDS-PAGE; WB. If bio-activity of the protein is needed, please check active protein
Stability	The thermal stability is described by the loss rate. The loss rate was determined by accelerated thermal degradation test, that is, incubate the protein at 37 centigrade for 48h, and no obvious degradation and precipitation were observed. The loss rate is less than 5% within the expiration date under appropriate storage condition.
Storage	Avoid repeated freeze/thaw cycles. Store at 2-8 centigrade for one month. Aliquot and store at -80 centigrade for 12 months.
Reconstitution	Reconstitute in PBS or others

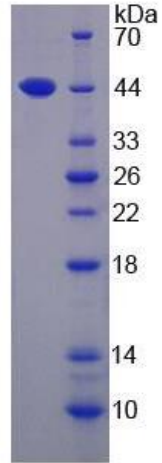
GENE INFORMATION

Gene Name	Dcx doublecortin [Mus musculus]
Official Symbol	Dcx
Synonyms	DCX; doublecortin; neuronal migration protein doublecortin; lis-X; doublin; doublecortex; lissencephalin-X; lissencephaly, X-linked (doublecortin); Dbct;
Gene ID	13193
mRNA Refseq	NM_001110222
Protein Refseq	NP_001103692

 Tel: 1-631-559-9269 1-516-512-3133

 Email: info@creative-biomart.com  Fax: 1-631-938-8127

 45-1 Ramsey Road, Shirley, NY 11967, USA



15% SDS-PAGE

 Tel: 1-631-559-9269 1-516-512-3133

 Email: info@creative-biomart.com  Fax: 1-631-938-8127

 45-1 Ramsey Road, Shirley, NY 11967, USA