

## Recombinant Mouse Ddr1 Protein(Asp22-Ala415), His-tagged

Cat. No. Ddr1-1151M Lot. No. (See product label)

### SPECIFICATION

<b>Product Overview</b>	Recombinant Mouse Ddr1 Protein(Asp22-Ala415)(Q03146-1), fused with C-terminal His tag, was expressed in HEK293.
<b>Species</b>	Mouse
<b>Source</b>	HEK293
<b>ProteinLength</b>	Asp22-Ala415
<b>Form</b>	Lyophilized from 0.22µm filtered solution in PBS (pH 7.4). Normally 8% trehalose is added as protectant before lyophilization.
<b>Molecular Mass</b>	The protein has a predicted MW of 44.9 kDa. Due to glycosylation, the protein migrates to 60-65 kDa based on Tris-Bis PAGE result.
<b>Endotoxin</b>	Less than 1EU per µg by the LAL method.
<b>Purity</b>	> 95% as determined by Tris-Bis PAGE; > 95% as determined by HPLC.
<b>Storage</b>	-20 to -80°C for 12 months as supplied from date of receipt. -80°C for 3-6 months after reconstitution. 2-8°C for 2-7 days after reconstitution. Recommend to aliquot the protein into smaller quantities for optimal storage. Please minimize freeze-thaw cycles.

 Tel: 1-631-559-9269 1-516-512-3133

 Email: [info@creative-biomart.com](mailto:info@creative-biomart.com)  Fax: 1-631-938-8127

 45-1 Ramsey Road, Shirley, NY 11967, USA

**Reconstitution** Centrifuge the tube before opening. Reconstituting to a concentration more than 100 µg/ml is recommended. Dissolve the lyophilized protein in distilled water.

## GENE INFORMATION

**Gene Name** [Ddr1 discoidin domain receptor family, member 1 \[ Mus musculus \]](#)

**Official Symbol** [Ddr1](#)

**Synonyms** DDR1; discoidin domain receptor family, member 1; epithelial discoidin domain-containing receptor 1; tyrosine kinase DDR; cell adhesion kinase; tyrosine-protein kinase CAK; protein-tyrosine kinase MPK-6; CD167 antigen-like family member A; discoidin receptor tyrosine kinase; epithelial discoidin domain receptor 1; Cak; Nep; PTK3A; CD167a; AI323681; 6030432F18;

**Gene ID** [12305](#)

**mRNA Refseq** [NM\\_001198831](#)

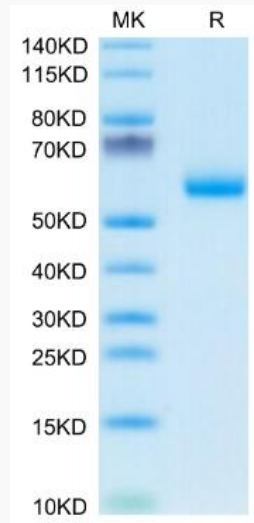
**Protein Refseq** [NP\\_001185760](#)

 Tel: 1-631-559-9269 1-516-512-3133

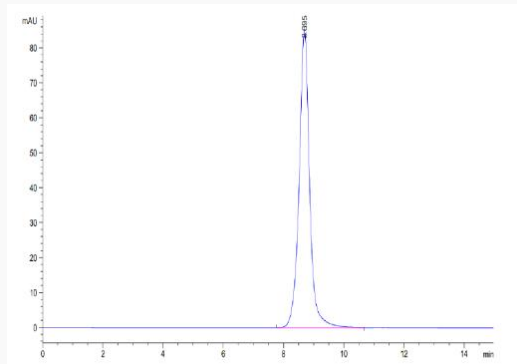
 Email: [info@creative-biomart.com](mailto:info@creative-biomart.com)  Fax: 1-631-938-8127

 45-1 Ramsey Road, Shirley, NY 11967, USA

**SDS-PAGE**



**SEC-HPLC**



 Tel: 1-631-559-9269 1-516-512-3133

 Email: [info@creative-biomart.com](mailto:info@creative-biomart.com)  Fax: 1-631-938-8127

 45-1 Ramsey Road, Shirley, NY 11967, USA