

Recombinant Mouse DDT Protein (1-118aa), N-His tagged

Cat. No. Ddt-01M Lot. No. (See product label)

SPECIFICATION

Product Overview	Recombinant mouse Ddt (1-118aa), fused to His-tag at N-terminus, was expressed in E. coli and purified by using conventional chromatography techniques.
Species	Mouse
Source	E.coli
ProteinLength	1-118aa
Description	Enables protease binding activity. Involved in positive regulation of inflammatory response. Located in extracellular space. Is expressed in several structures, including alimentary system; central nervous system; eye; genitourinary system; and respiratory system. Orthologous to several human genes including DDT (D-dopachrome tautomerase).
Form	Liquid
Molecular Mass	15.5 kDa (141aa) confirmed by MALDI-TOF
AA Sequence	MGSSHHHHHHSSGLVPRGSHMGSMFPVELETNLPASRIPAGLENRLCAATATILDK PEDRVSVTIRPGMTLLMNKSTEPCAHLLVSSIGVVGTAEQNRTHSASFFKFLTEELS DQDRIVIRFFPLEAWQIGKKGTVMTFL
Purity	> 95% by SDS-PAGE

 Tel: 1-631-559-9269 1-516-512-3133

 Email: info@creative-biomart.com  Fax: 1-631-938-8127

 45-1 Ramsey Road, Shirley, NY 11967, USA

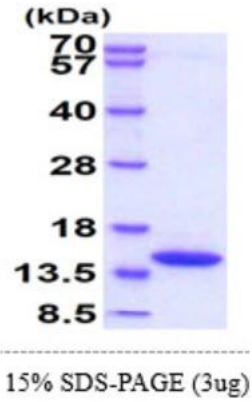
Applications	SDS-PAGE
Notes	For research use only. This product is not intended or approved for human, diagnostics or veterinary use.
Storage	Can be stored at +2 to +8 centigrade for 1 week. For long term storage, aliquot and store at -20 to -80 centigrade. Avoid repeated freezing and thawing cycles.
Concentration	1 mg/mL (determined by Bradford assay)
Storage Buffer	20mM Tris-HCl buffer (pH 8.0) containing 10% glycerol
GENE INFORMATION	
Gene Name	Ddt D-dopachrome tautomerase [Mus musculus]
Official Symbol	Ddt
Synonyms	DDT; D-dopachrome tautomerase; D-dopachrome decarboxylase; C78655;
Gene ID	13202
mRNA Refseq	NM_010027
Protein Refseq	NP_034157
UniProt ID	O35215

 Tel: 1-631-559-9269 1-516-512-3133

 Email: info@creative-biomart.com  Fax: 1-631-938-8127

 45-1 Ramsey Road, Shirley, NY 11967, USA

SDS-PAGE



3 μ g by SDS-PAGE under reducing condition and visualized by coomassie blue stain.

 Tel: 1-631-559-9269 1-516-512-3133

 Email: info@creative-biomart.com  Fax: 1-631-938-8127

 45-1 Ramsey Road, Shirley, NY 11967, USA